

Installing the Model 1547B Traffic Sensor

The Model 1547B is a complete traffic detection solution for use with Series 1500 Intercom Systems. The sensor's operating temperature range is -20° to +55°C (-4° to 131°F). A heater may be required in the drive-up enclosure for some low temperature applications. The green LED indicates Power On. The N.O. Output On is indicated by the yellow LED.

1. Using a flat blade screw driver, carefully remove the knockout on the bottom of the 1520 Lane Station (*Figure 2*).
2. Plug the 1547B connector into the exposed port on the bottom of the 1520 (*Figure 2*).
3. Drill two 5/16 inch holes 3/8 inch apart. Center the holes on the 1547B's IR emitter and receiver lenses (see detail below).
4. Turn the Sensitivity Control on top of the sensor all the way clockwise (*Figure 3*).
5. Using the included hardware, mount the 1547B to the drive-up enclosure (*Figure 2*).

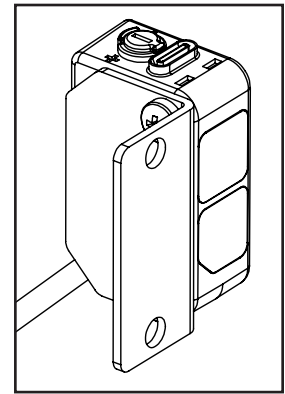


Figure 1. Traffic Sensor

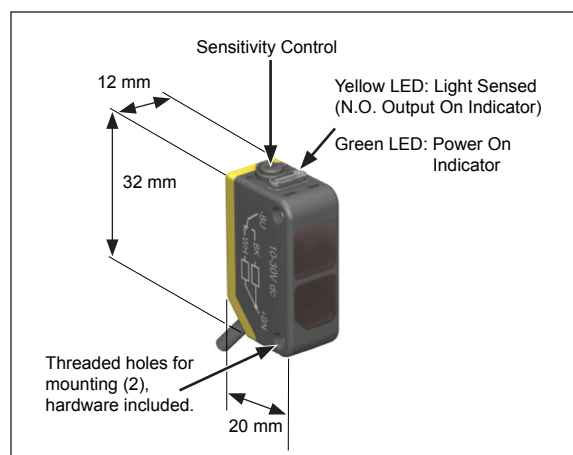
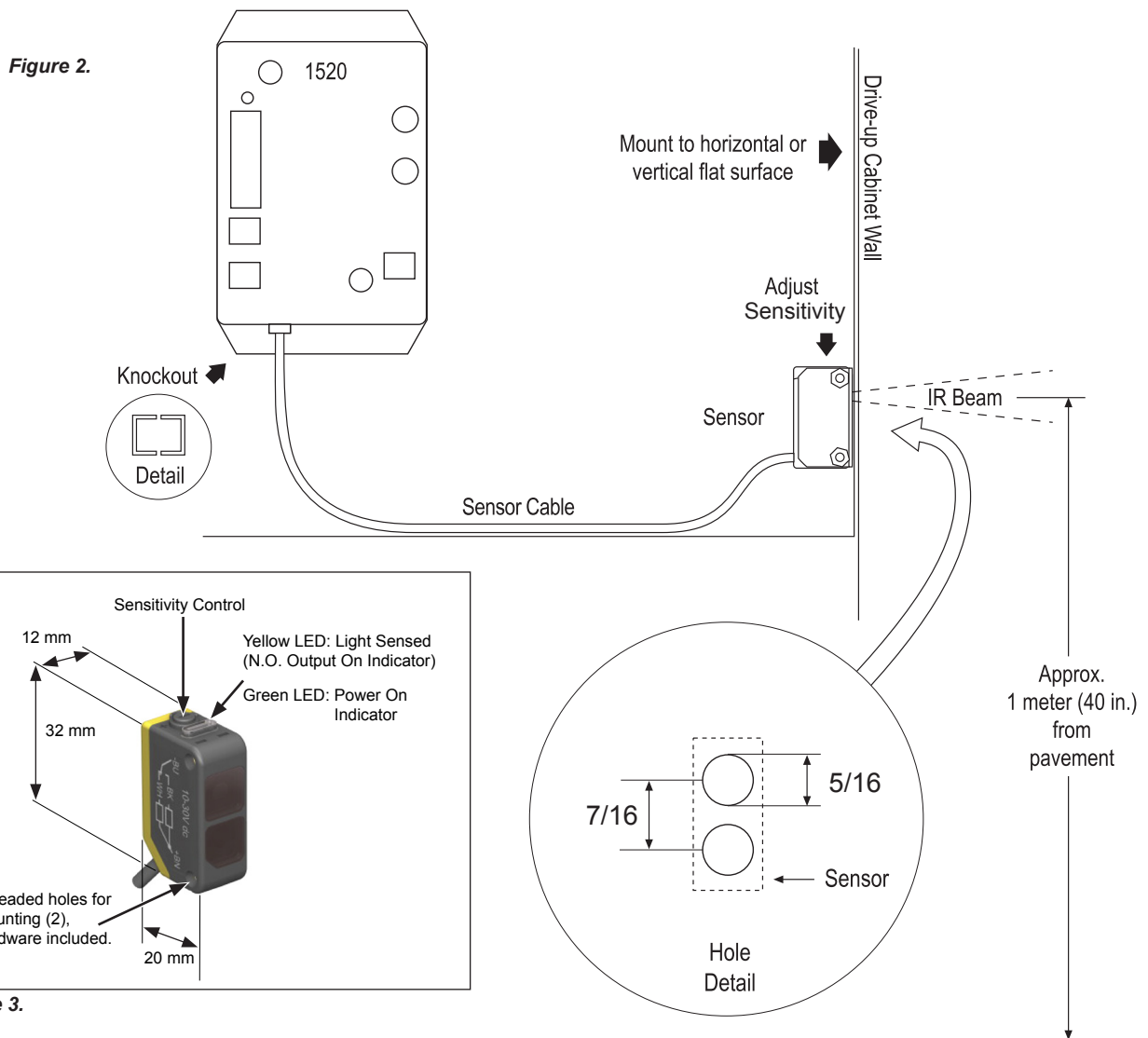


Figure 3.

Sensor may be mounted vertically (as shown) or horizontally.

Audio Authority[®]

2048 Mercer Road, Lexington, Kentucky 40511-1071 USA
 Phone: 859-233-4599 • Fax: 859-233-4510
 Customer Toll-Free USA & Canada: 800-322-8346
 www.audioauthority.com • support@audioauthority.com



TECH TIPS



COVENANT
 Security Equipment

752-527C
 20150722