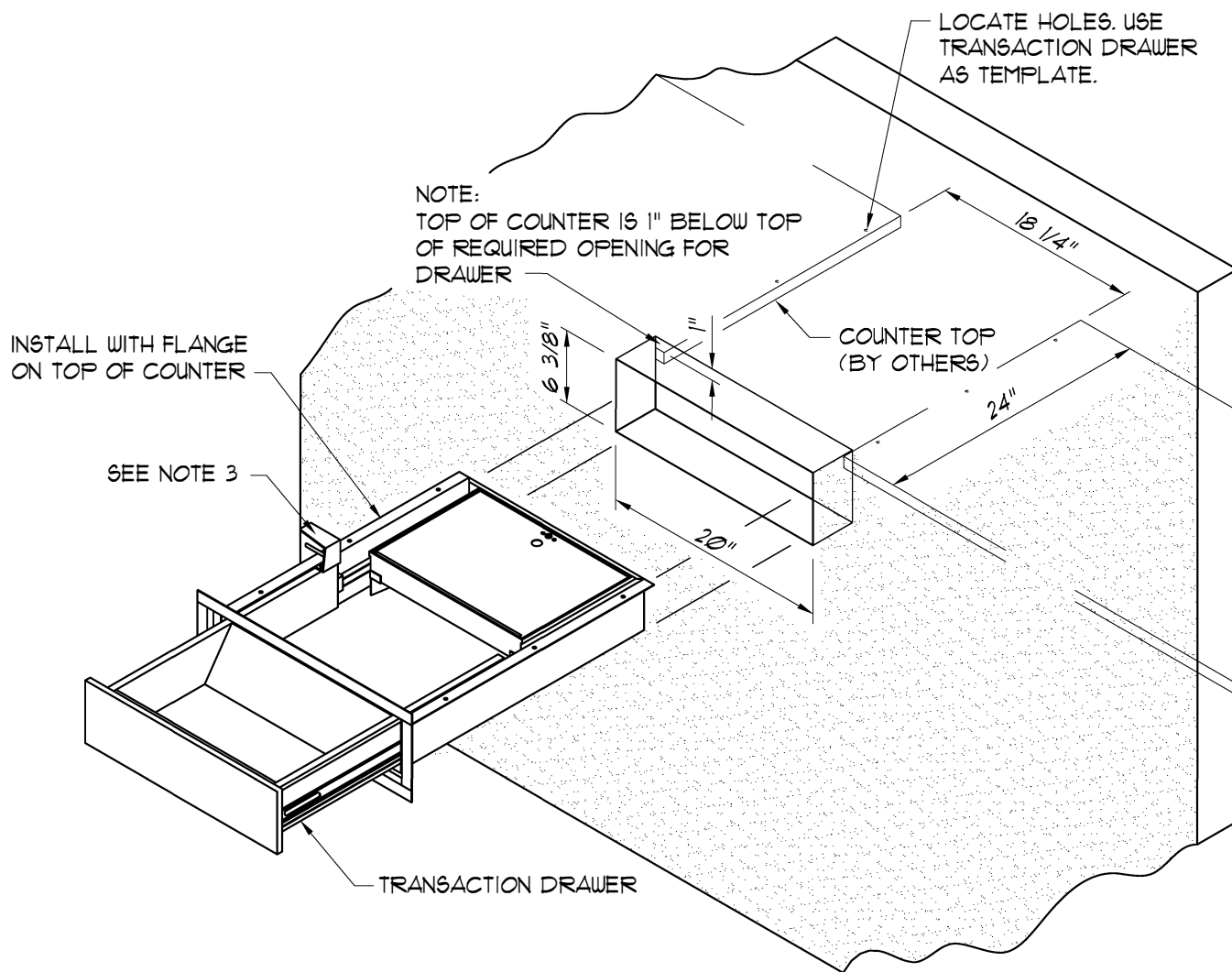


# TRANSACTION DRAWER INSTALLATION INSTRUCTION MODEL SS-4D

1. CUT OPENING IN WALL
2. CUT COUNTER TOP OPENING AS SHOWN ON DRAWING
3. REMOVE DRAWER HANDLE
4. SLIDE DRAWER THROUGH OPENING AND SET WITH FLANGES ON TOP OF COUNTER
5. LOCATE DRAWER IN POSITION AND FASTEN WITH SCREW (6) (BY OTHERS)
6. REFIT DRAWER HANDLE
7. INSURE THE DRAWER IS CORRECTLY LOCATED AND IS FREE TO SLIDE SMOOTHLY

FOR UNUSUAL INSTALLATIONS, CONTACT ARMORTEX® FOR TECHNICAL ASSISTANCE.



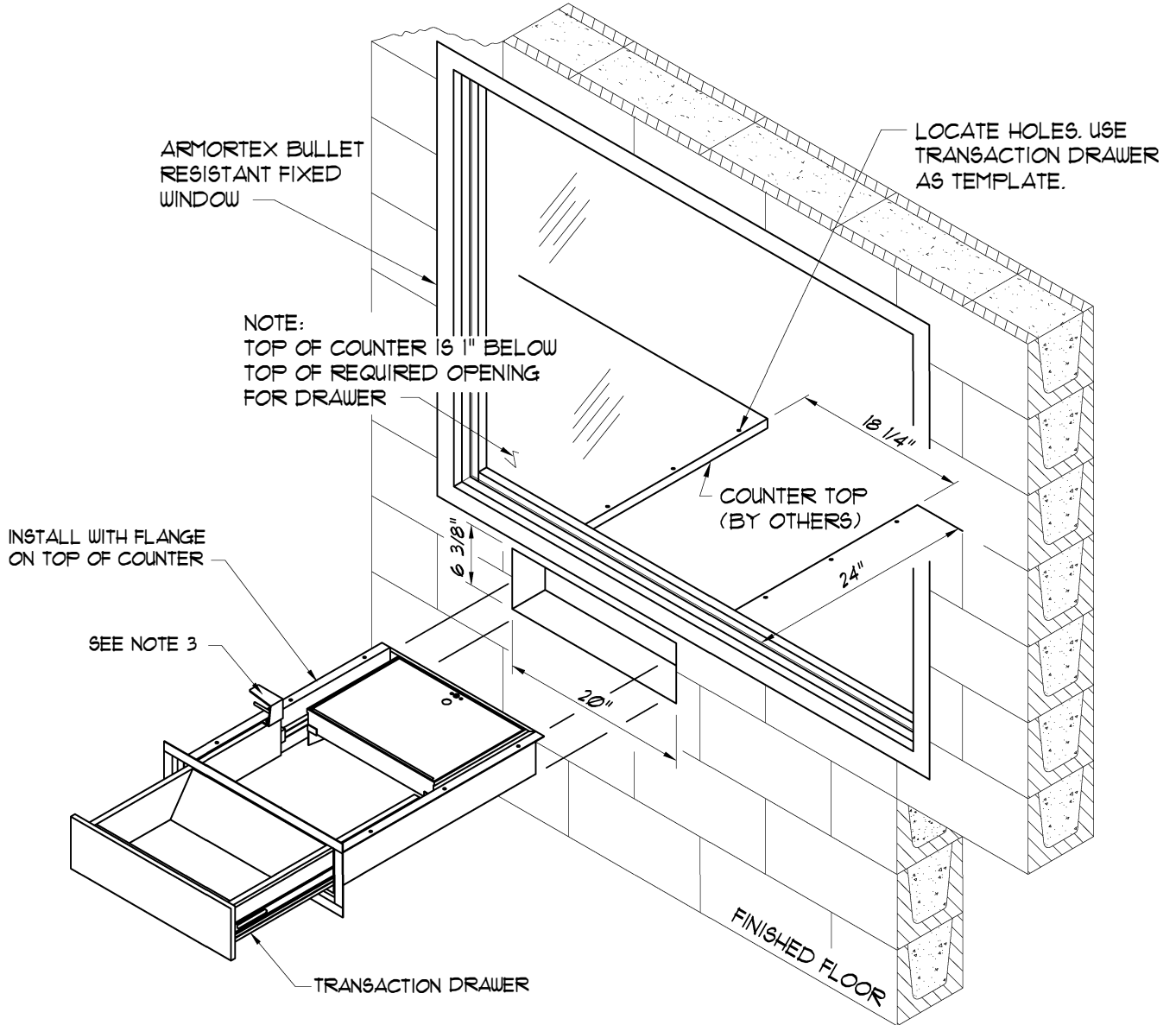
C:\ARMORTEX MASTERS - 2007\INSTALLATION\INST9520.DWG.DWG 05/16/07 @ 14:31 User: gperez

REVISIONS			<b>ARMORTEX</b> ® BULLET / BLAST RESISTANT PRODUCTS		BALLISTIC LEVEL	
No.	DESCRIPTION	DATE	<b>COVENANT</b> Security Equipment		DRN. BY:	DATE:
			TITLE: ARMORTEX® BULLET RESISTANT TRANSACTION DRAWER MODEL SS-4D  UNLESS OTHERWISE SPECIFIED ALL DIMENSIONS ARE IN INCHES		PROJECT NAME:	
					SCALE: NONE	
			DRAWING No. INST9520		DRAWING No. SHEET	
					1 OF 1	

# TRANSACTION DRAWER INSTALLATION INSTRUCTION MODEL SS-4D

1. CUT OPENING IN WALL
2. CUT COUNTER TOP OPENING AS SHOWN ON DRAWING
3. REMOVE DRAWER HANDLE
4. SLIDE DRAWER THROUGH OPENING AND SET WITH FLANGES ON TOP OF COUNTER
5. LOCATE DRAWER IN POSITION AND FASTEN WITH SCREW (6) (BY OTHERS)
6. REFIT DRAWER HANDLE
7. INSURE THE DRAWER IS CORRECTLY LOCATED AND IS FREE TO SLIDE SMOOTHLY

FOR UNUSUAL INSTALLATIONS, CONTACT ARMORTEX® FOR TECHNICAL ASSISTANCE.



C:\ARMORTEX MASTERS\INSTALLATION\INST9527.DWG.DWG 05/22/06 @ 14:15 User: aperez

<b>REVISIONS</b>			<b>ARMORTEX®</b> BULLET / BLAST RESISTANT PRODUCTS		<b>BALLISTIC LEVEL</b>	
No.	DESCRIPTION	DATE	<b>COVENANT</b> Security Equipment		DRN. BY:	DATE:
			TITLE: ARMORTEX® BULLET RESISTANT TRANSACTION DRAWER MODEL SS-4D		A. Perez	03-14-03
					PROJECT NAME:	
			UNLESS OTHERWISE SPECIFIED ALL DIMENSIONS ARE IN INCHES		SCALE NONE	PROJECT No.
			DRAWING No. INST9527		SHEET 1 OF 1	