



# COVENANT

Security Equipment

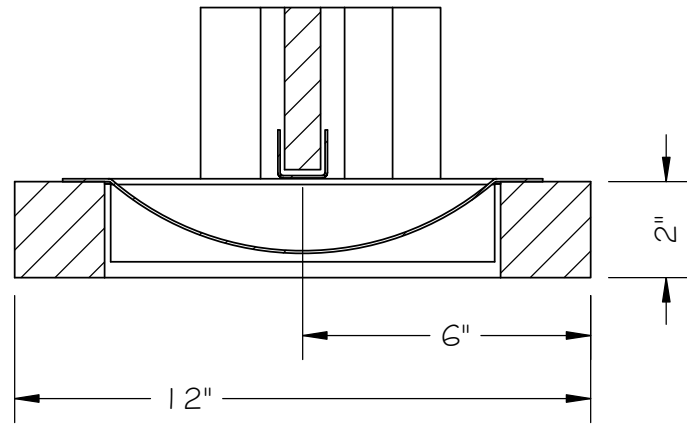
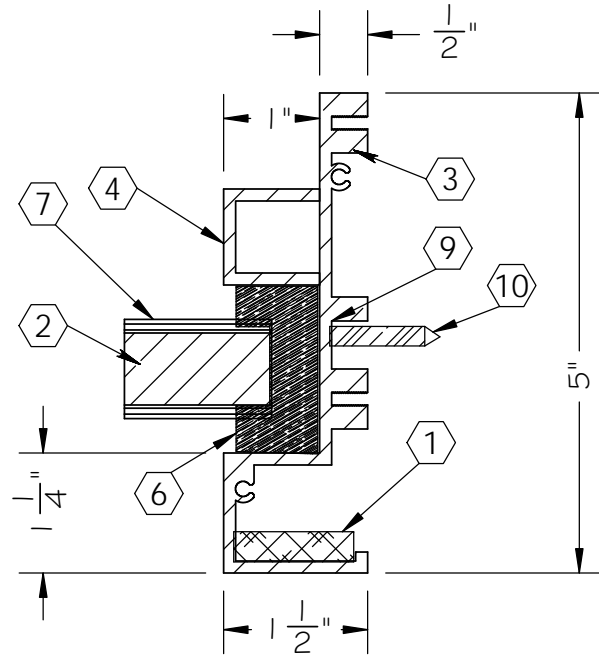
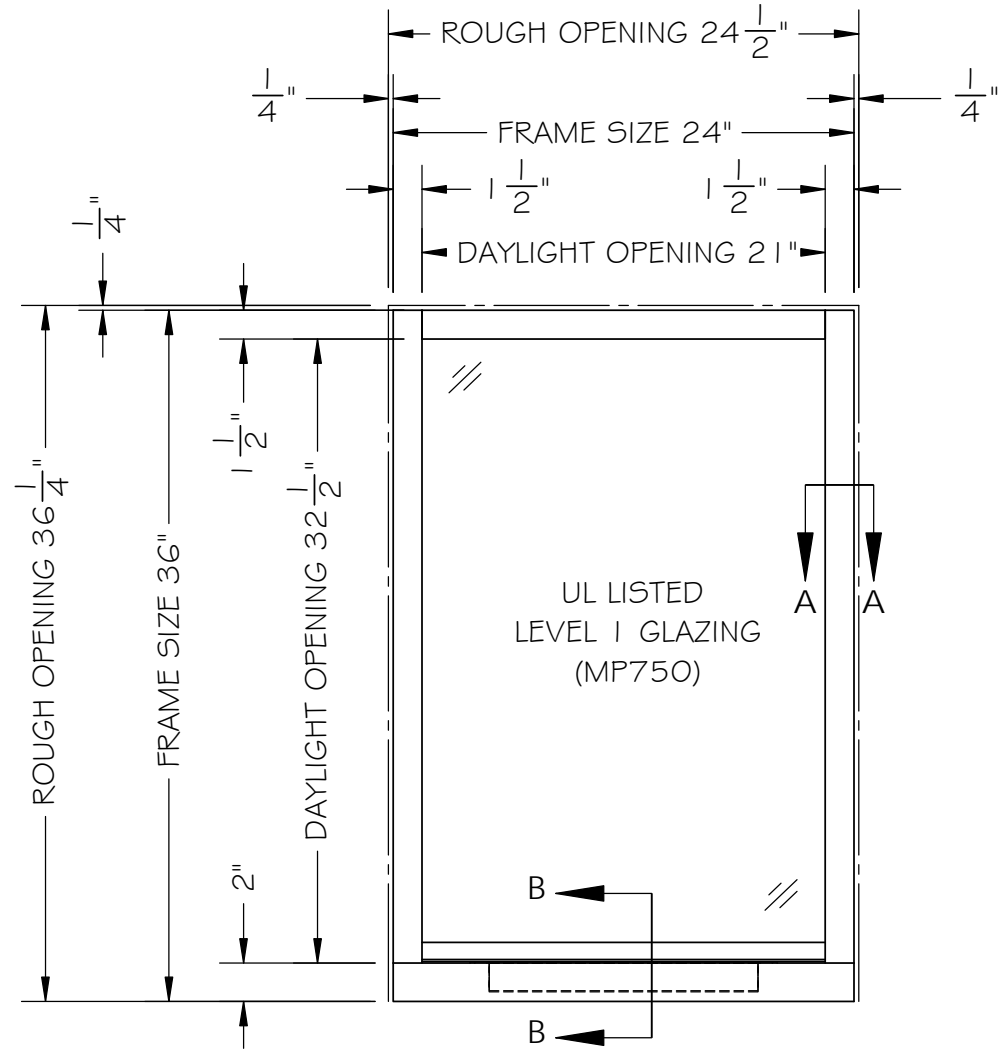
## SHEET

## DESCRIPTION

01	COVER SHEET / INDEX
02	ALUMINUM TRANSACTION WINDOW DETAILS
03	DEALTRAY DETAILS

FABRICATION WILL NOT BEGIN UNTIL  
SIGNED APPROVED DRAWINGS ARE  
RECEIVED BY ARMORTEX®

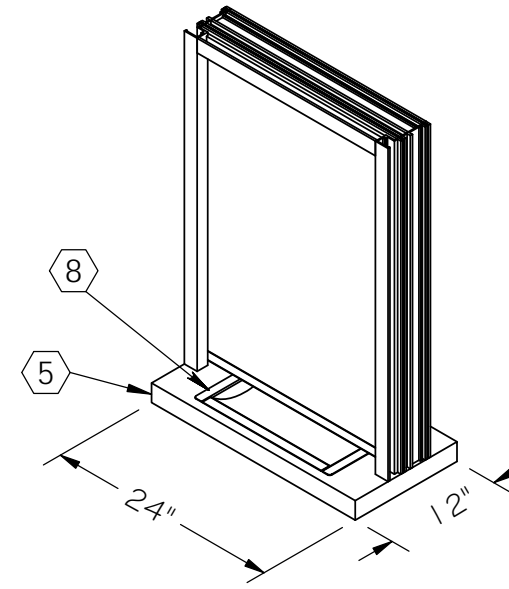
<b>REVISIONS</b>		UNLESS OTHERWISE SPECIFIED: DIMENSIONS ARE IN INCHES TOLERANCES: FRACTIONAL: ± 1/16" ANGULAR: ± 1° TWO PLACE DECIMAL: ± 0.01 THREE PLACE DECIMAL: ± 0.005 INTERPRET GEOMETRIC TOLERANCING PER: ASME Y14.5 MATERIAL: NOTED FINISH: NOTED DO NOT SCALE DRAWING	PROJECT NO:	09657	
No.	DATE		CUSTOMER NAME:	INTERBANK-EXCHANGE, LLC	
A	03-19-2020		PROJECT NAME:	INTERBANK-EXCHANGE, LLC	
				P.O. BOX 632, BLACK CANYON CITY, AZ 85324 (866) 286-4400 <a href="http://WWW.interbank-equipment.com">WWW.interbank-equipment.com</a>	
			DESCRIPTION:	COVER SHEET	
			DRAWN	NAME	DATE
			CHECKED	B. LEWIS	3-19-20
				SIZE	DWG. NO.
				B	09657 SUBMITTAL PACKAGE
				SCALE: 1:16	WEIGHT:TBD
					SHEET 1 OF 3



**ANODIZED ALUMINUM TRANSACTION WINDOW NOTES:**

- ① ARMORTEX® BALLISTIC MATERIAL
- ② LEVEL 1 BULLET RESISTANT GLAZING
- ③ CLEAR ANODIZED ALUMINUM WINDOW FRAME
- ④ REMOVABLE STOP (1" x 1")
- ⑤ BLACK LAMINATE COUNTER
- ⑥ NATURAL VOICE SPACER
- ⑦ STAINLESS STEEL GLAZING CAP
- ⑧ ARMORTEX® DEAL TRAY (RMDT 1016)
- ⑨ ANCHOR HOLES AS REQUIRED
- ⑩ ANCHORS AS REQUIRED (BY OTHERS)

ANCHOR TYPE
ANCHOR HOLES PROVIDED



APPROVED AS DRAWN     APPROVED AS NOTED     REJECTED

X  
SIGNATURE \_\_\_\_\_ DATE \_\_\_\_\_

PROJECT NO: 09657		PROJECT NAME: Covenant Security Equipment		PROJECT NAME:	
CUSTOMER NAME: Covenant Security Equipment		DRAWN: B. LEWIS		CHECKED:	
DESCRIPTION: ALT WINDOW BALLISTIC LEVEL 1		DATE: 3-19-20		SIZE DWG. NO: 09657 SUBMITTAL PACKAGE	
UNLESS OTHERWISE SPECIFIED: DIMENSIONS ARE IN INCHES TOLERANCES: FRACTIONAL: ±1/16" ANGULAR: ±1° TWO PLACE DECIMAL: ±.01 THREE PLACE DECIMAL: ±.005		INTERPRET GEOMETRIC TOLERANCING PER: ASME Y14.5		SCALE: 1:10 WEIGHT: TBD	
MATERIAL AS NOTED FINISH		PROJECT NO: 09657		SHEET 2 OF 3	
DO NOT SCALE DRAWING		PROJECT NO: 09657		SHEET 2 OF 3	



"ALL GLAZING PRODUCTS SHOULD BE CLEANED ONLY WITH WARM SOAPY WATER, RINSED WITH CLEAR WATER AND DRIED WITH A SOFT NON-ABRASIVE CLOTH"

