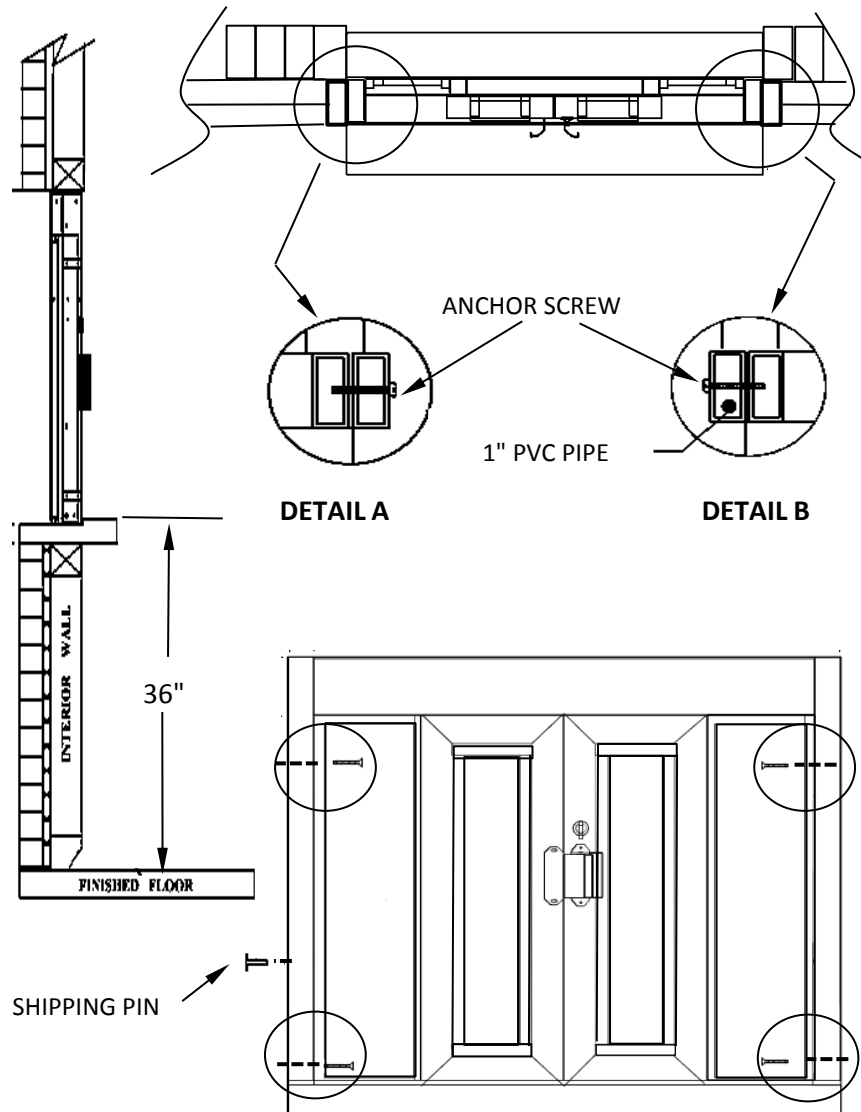


**TYPICAL  
BPSC-4236 INSTALLATION**

- 1) Quikserv windows must be installed level and square to work properly.
- 2) Anchor through each side jamb at two places top & bottom of each jamb using pre-drilled holes. (See Detail A & B)
- 3) Recommended height from floor to service opening to be 36". (Check any & all local or city codes)
- 4) Silicone all exterior and interior joint:
- 5) All other type of anchoring to be approved by certified engineer.



**FIGURE 1**

**General Notes**

**Actual Dimension**  
42"(W) x 36"(H)

**Service Opening**  
14"(W) x 28-1/2"(H)

**Rough Opening**  
48-3/8"(W) x 36-3/8"(H)

**NOTE 1:**

Anchor Screws to be supplied by contractor (See Detail A)

**NOTE 2:**

Remove shipping pin before installing the window. The shipping pin is located in the side jamb. (See Figure 1)

**CAUTION:**

Use caution when drilling thru the right jamb. A 1" pvc tube is located inside the right jamb. Drilling into 1" pvc tube will void warranty. (See Detail B)

**CE COVENANT**  
Security Equipment  
9323 N Government Way  
Hayden, ID 83835

<b>TITLE:</b>				
<b>INSTALLATION PROCEDURE</b>				
<b>DRAWING NAME:</b>				
<b>CSE-QS-BPSC-4236</b>				
<b>DATE</b>	<b>DRAWN BY</b>	<b>SCALE</b>	<b>SHEET</b>	<b>SIZE</b>
4/5/2016	RBV	NTS	1 of 1	<b>A</b>

NOTE: THIS DRAWING EMBODIES A CONFIDENTIAL PROPRIETY DESIGN ORIGINATED AND OWNED BY COVENANT SECURITY EQUIPMENT SUBMITTED UNDER A CONFIDENTIAL RELATIONS ALL PATENT, MANUFACTURING, SALE RIGHTS REGARDING THE SAME ARE RESERVED EXCEPT TO THE EXTENT RIGHTS ARE EXPRESSLY GRANTED TO OTHERS. THE RECIPIENT AGREES BY ACCEPTING HIP. THESE DRAWINGS NOT TO SUPPLY OR DISCLOSE ANY INFORMATION REGARDING THEM TO ANY UNAUTHORIZED PERSON.