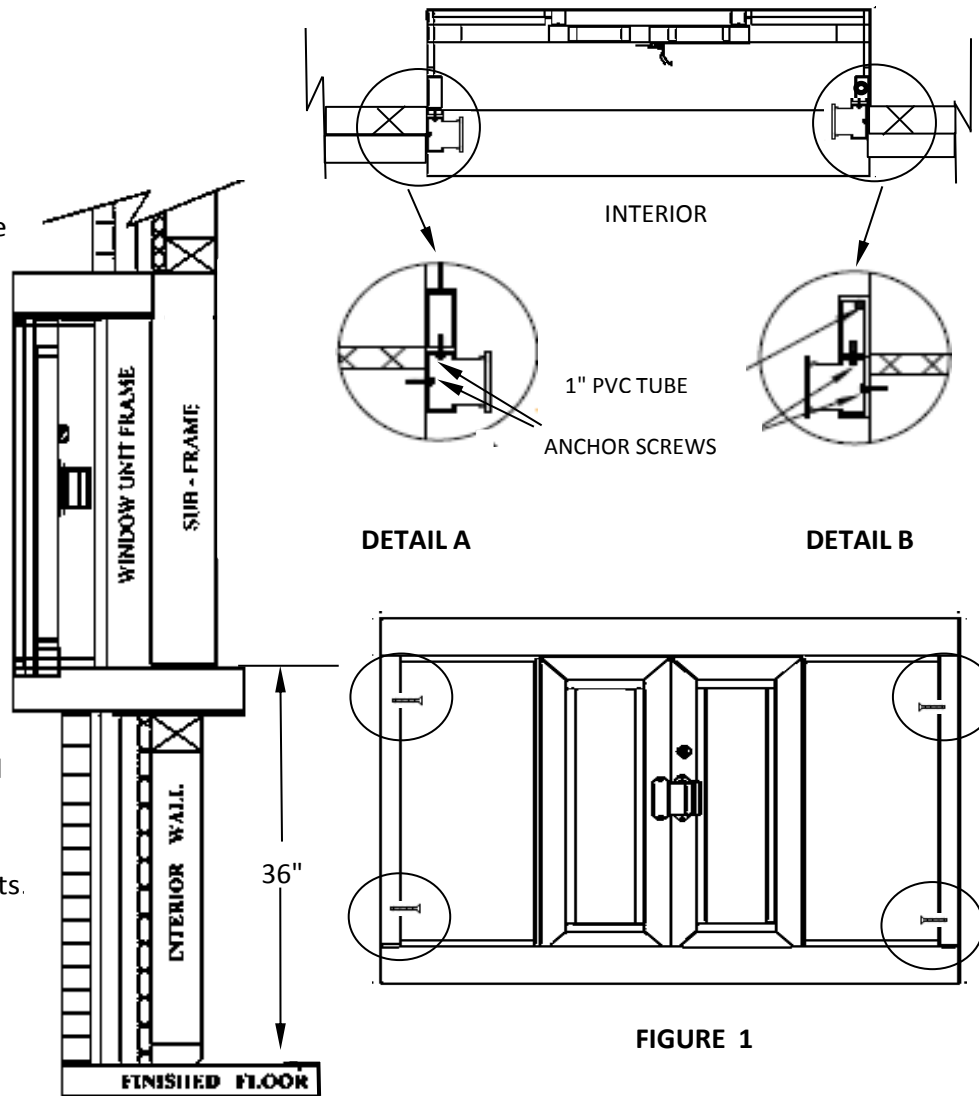


**TYPICAL  
BPSC-5440 INSTALLATION**

- 1) Quikserv windows must be installed level and square to work properly.
- 2) Install a 3 sided open back sub-frame 1-3/4" x 4". (Optional)
- 3) Anchor through each sub-frame at two places approx. 5" at top and bottom of each side jambs. (See Detail A)
- 4) If not using sub-frame, use caution when drilling thru side jamb. Drilling into 1" pvc tube will void warranty. (See Figure 1)
- 5) Recommended height from floor to service opening to be 36". ( Check all local and city codes )
- 6) Silicone all exterior and interior joints.
- 7) All other type of anchoring to be approved by certified engineer.



**FIGURE 1**

**General Notes**

**Actual Dimension**  
53-1/2"(W) x 40"(H)

**Service Opening**  
17-3/4"(W) x 31-1/2"(H)

**Rough Opening**  
54"(W) x 40-1/2"(H)

**NOTE 1:**  
Anchor Screws to be supplied by contractor.

**NOTE 2:**  
1-3/4 x 4 open back sub-frame with snap in cover supplied by others. (See Details A & B)

**NOTE 3:**  
Sash & glass must not be obscured by the exterior finished wall.

**CAUTION:**  
Use caution when drilling thru the right jamb. A 1" pvc tube is located inside the right jamb.

**COVENANT**  
Security Equipment  
9323 N Government Way  
Hayden, ID 83835

TITLE: <b>INSTALLATION PROCEDURE</b>				
DRAWING NAME: <b>CSE-QS-BPSC-5440 INSTALLATION</b>				
DATE 4/06/2016	DRAWN BY RBV	SCALE NTS	SHEET 1 of 1	SIZE <b>A</b>

NOTE: THIS DRAWING EMBODIES A CONFIDENTIAL PROPRIETY DESIGN ORIGINATED AND OWNED BY COVENANT SECURITY EQUIPMENT SUBMITTED UNDER A CONFIDENTIAL RELATIONS ALL PATENT, MANUFACTURING, SALE RIGHTS REGARDING THE SAME ARE RESERVED EXCEPT TO THE EXTENT RIGHTS ARE EXPRESSLY GRANTED TO OTHERS. THE RECIPIENT AGREES BY ACCEPTING HIP. THESE DRAWINGS NOT TO SUPPLY OR DISCLOSE ANY INFORMATION REGARDING THEM TO ANY UNAUTHORIZED PERSON.