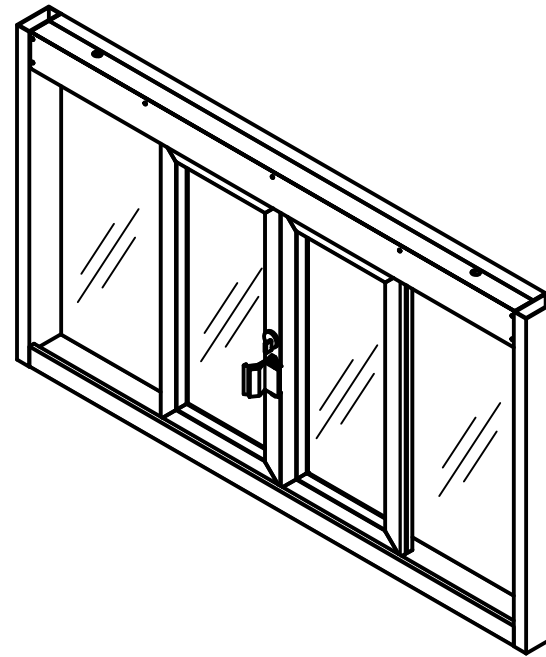
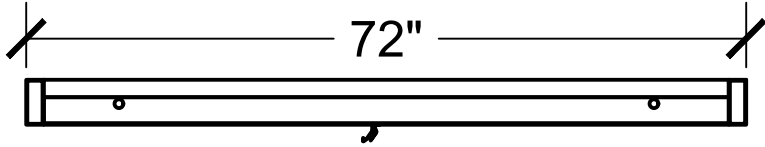


Top View



PLEASE SELECT:

1. FRAMING:

- Aluminum UL Rated Alum

2. FRAME COLOR:

- Bronze Anodized Clear Anodized

Other: _____

3. GLAZING:

- 1/4" Tempered 5/8" or 1" Insulated

- 3/4" Poly - L1 1-1/4" Acrylic - L1

- 1-1/4" Poly - L3 1-1/4" Acrylic - L3

- Storm Impact Low-E

Other: _____

Key Notes

Unit:

BPSC-7241

Actual Dimension:

72"(W) X 41"(H)

Rough Opening:

72³/₈"(W) X 41³/₈"(H)

Service Opening:

29¹/₂"(W) X 33¹/₂"(H)

Engineer Notes

Date drawn: 11/12/2019

Drawn by: A.V.

File name: BPSC-7241 Cov

Page: 1 OF 1

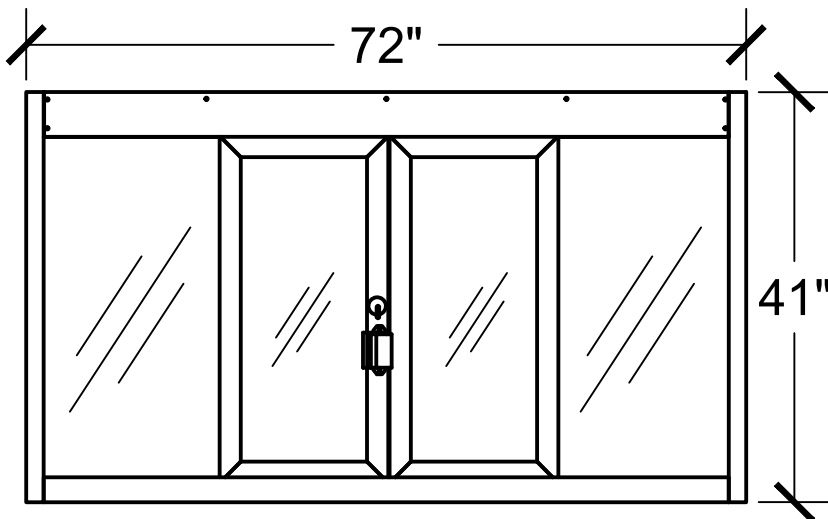
Scale: 1:20

NOTE: THIS DRAWING EMBODIES A CONFIDENTIAL PROPRIETY DESIGN ORIGINATED AND OWNED BY COVENANT SECURITY EQUIPMENT SUBMITTED UNDER A CONFIDENTIAL RELATIONS ALL PATENT, MANUFACTURING, SALE RIGHTS REGARDING THE SAME ARE RESERVED EXCEPT TO THE EXTENT RIGHTS ARE EXPRESSLY GRANTED TO OTHERS. THE RECIPIENT AGREES BY ACCEPTING HIP. THESE DRAWINGS NOT TO SUPPLY OR DISCLOSE ANY INFORMATION REGARDING THEM TO ANY UNAUTHORIZED PERSON.

SIGNATURE: _____

DATE: _____

Interior Front View



Side View

