

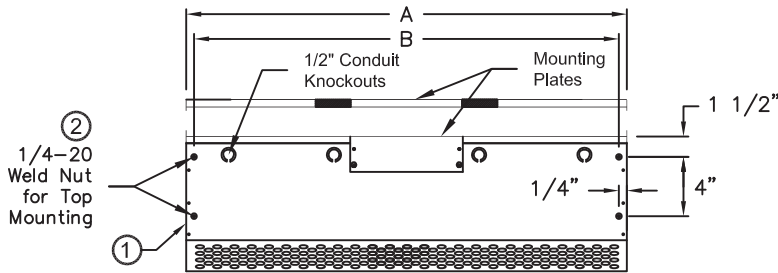
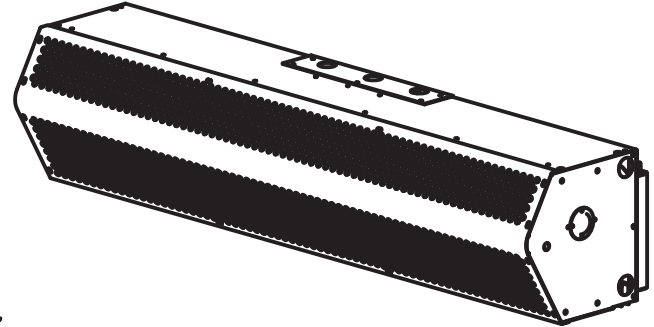


COVENANT
Security Equipment

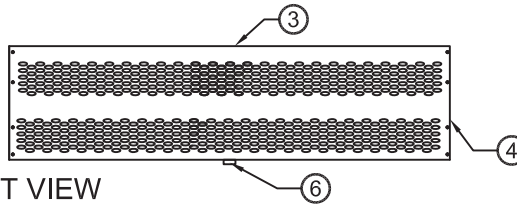
PROJECT		OPTIONS/ITEMS	
TITLE		DATE 8/3/16	
COMMENTS		PAGE	
		REV. NO	
MODEL NO. LP2 Series	DRAWING NO LPV2U-F	DRAWN BY BH	CHECKED BY
		FILE NAME	

Unheated Drawing

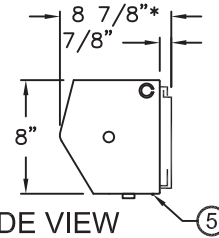
LPV2 (LoPro2 Variable Speed) Series



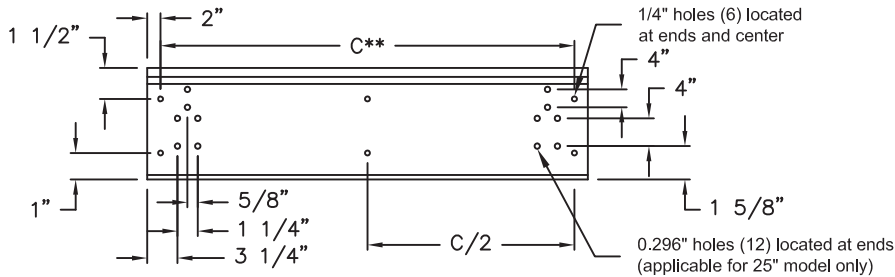
TOP VIEW



FRONT VIEW



SIDE VIEW



REAR VIEW

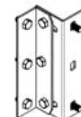
*Depth for Air Curtain with SimpleLink option will be 11 3/4"



⑧ Recommended Accessories



Door Limit Switches
(Mechanical plunger/roller style shown)



Brackets
(Offset mounting style shown)

*- Use corresponding letters in "Electrical Data" columns to complete the model numbers.

**-"C" only applies to single units up to 72" units. Dims are not applicable for units 84" and longer.

MODEL NUMBER	OVERALL LENGTH A (in)	MOUNTING LENGTH B (in)	REAR MOUNTING CENTER C (in)
LPV225-1U*-OB	25	24 1/2	21
LPV236-1U*-OB	36	35 1/2	32
LPV242-1U*-OB	42	41 1/2	38
LPV248-1U*-OB	48	47 1/2	44
LPV260-1U*-OB	60	59 1/2	56
LPV272-1U*-OB	72	71 1/2	68
LPV284-2U*-OB	86	85 1/2	N/A
LPV296-2U*-OB	98	97 1/2	N/A
LPV2108-2U*-OB	110	109 1/2	N/A
LPV2120-2U*-OB	122	121 1/2	N/A
LPV2144-2U*-OB	146	145 1/2	N/A

Notes:

- This product is designed to meet the National Electric Code (NEC) and ETL Listed (UL 507 and CSA 22.2).
- 1/4" mounting holes provided for wall mounting (4) and overhead mounting (4), (2) on each end. Additional 0.296" mounting holes (12) provided.
- All units have a self contained one piece cabinet up to 72", fire retardant and corrosion proof paint lock metal double protected with baked on Obsidian Black color, rust preventative electrostatic polyurethane powder coating.
- Cabinet has sufficient strength for fastening to wall on both ends without intermediate support. Units greater than 72" are double units joined with a 2" mounting bracket located in the center and must be center supported, field installed.
- Unit is to be installed such that air flow is unobstructed. Air discharge nozzle containing an adjustable air directional vane with 40° sweep front to back.
- Mounted adjustable speed controller knob allows air velocity to meet a wide range of field conditions. Units greater than 72", the speed controller will be located on the right hand unit and controls both units, field wired.
- Circuit protection as per NEC by others.
- Optional door limit switch and mounting brackets are field installed and/or wired by others. The door limit switch is to be mounted such that the air curtain turns on as door begins to open. To prevent unit damage, the mounting brackets must be installed such that the bottom of the air curtain is not below the door header.

Unheated Data Sheet

Applications: Environmental Separation (up to 8') and Insect Control (up to 7')

LPV2 (Low Profile Variable 2) Series 2	Mechanical Data						Lab Data	
Model Number	Nozzle Length (in)	Length (in)	Depth (in)	Height (in)	Motor (hp)	Weight (lbs)	Max Velocity (fpm)	Max Volume (cfm)
LPV225-1U*-OB	25	25	9	8	1/6	20	1800	625
LPV236-1U*-OB	36	36	9	8	1/6	32	1800	900
LPV242-1U*-OB	42	42	9	8	1/6	35	1800	1050
LPV248-1U*-OB	48	48	9	8	1/6	40	1800	1200
LPV260-1U*-OB	60	60	9	8	1/6	48	1800	1500
LPV272-1U*-OB	72	72	9	8	1/6	58	1800	1800
LPV284-2U*-OB	86	86	9	8	Two 1/6	75	1800	2100
LPV296-2U*-OB	98	98	9	8	Two 1/6	83	1800	2400
LPV2108-2U*-OB	110	110	9	8	Two 1/6	92	1800	2700
LPV2120-2U*-OB	122	122	9	8	Two 1/6	102	1800	3000
LPV2144-2U*-OB	146	146	9	8	Two 1/6	122	1800	3600

* - Use corresponding letters in "Electrical Data" columns to complete the model numbers

Note: Data above is for 60 Hz, 17% reduction in the performance data with 50 Hz.

Features:

- ❖ 1/6 HP continuous duty motors
- ❖ Sleek self-contained one-piece light gauge corrosion-resistant paint lock metal design
- ❖ ETL-certified to conform to UL 507 (US) and CSA 22.2 (Canada) standards (Indoor/Outdoor Use)
- ❖ Dynamically balanced corrosion-resistant aluminum crossflow wheels
- ❖ Very low-profile design, 8" (H) x 8 7/8" (D)
- ❖ Variable speed controller
- ❖ Wall mounting bracket removable for easy installation
- ❖ 1/4" mounting holes provided for wall mounting (4) and overhead mounting (4), 2 on each end
- ❖ Cabinet has sufficient strength for fastening to wall on both ends without intermediate support up to 72". (Models 84" to 144" require intermediate support in the center.)
- ❖ Adjustable air directional vane with 40° sweep front to back
- ❖ Standard color is Obsidian Black
- ❖ Rust preventative electrostatic polyurethane powder coating
- ❖ 5-year parts warranty
- ❖ Freight included (FOB continental USA)
- ❖ Proudly Made in the USA

Electrical Data (FLA)	Unit Voltage (Voltage Code)	
	115v/1Ø (A)	208/230v/1Ø (D)
LPV225-1U*-OB	2.4	1.2
LPV236-1U*-OB	2.4	1.2
LPV242-1U*-OB	2.4	1.2
LPV248-1U*-OB	2.4	1.2
LPV260-1U*-OB	2.6	1.4
LPV272-1U*-OB	2.6	1.4
LPV284-2U*-OB	4.8	2.4
LPV296-2U*-OB	4.8	2.4
LPV2108-2U*-OB	5.0	2.6
LPV2120-2U*-OB	5.2	2.8
LPV2144-2U*-OB	5.2	2.8

* - Use corresponding letters in "Electrical Data" columns to complete the model numbers.

Note: for ampacity, multiply FLA X 1.25

Options and Accessories: (see Accessories Brochure)

- ❖ Door limit switches
- ❖ Wall and overhead Bracket
- ❖ Custom colors and finishes (304SS, 316SS)
- ❖ SimpleLink controller (housing depth will be 11.75" with this option)

Sound Levels: (measured at 10' in an open field)

(25" & 36") - 49 dBA, (42") - 50 dBA, (48") - 52 dBA, (60"-96") - 53 dBA & (108"-144") - 54dBA

EXAMPLE

LPV2 72 - 1 U D - OB

