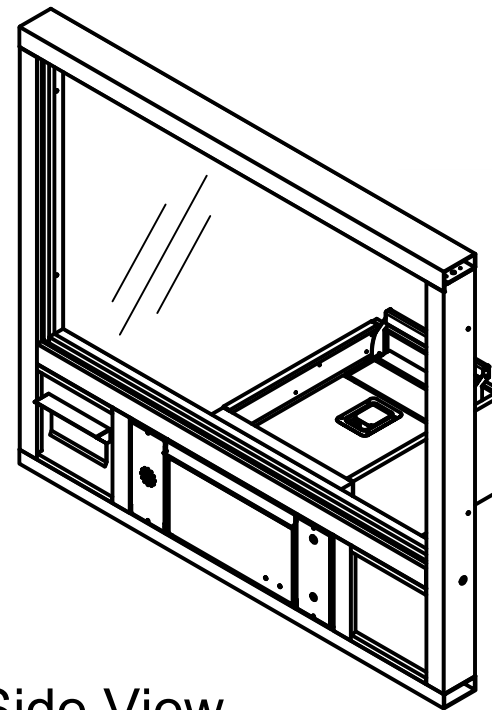
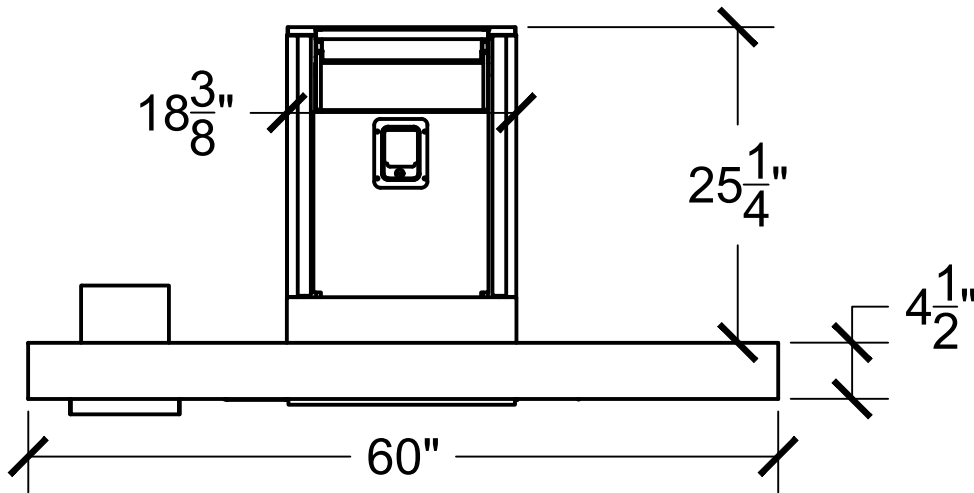
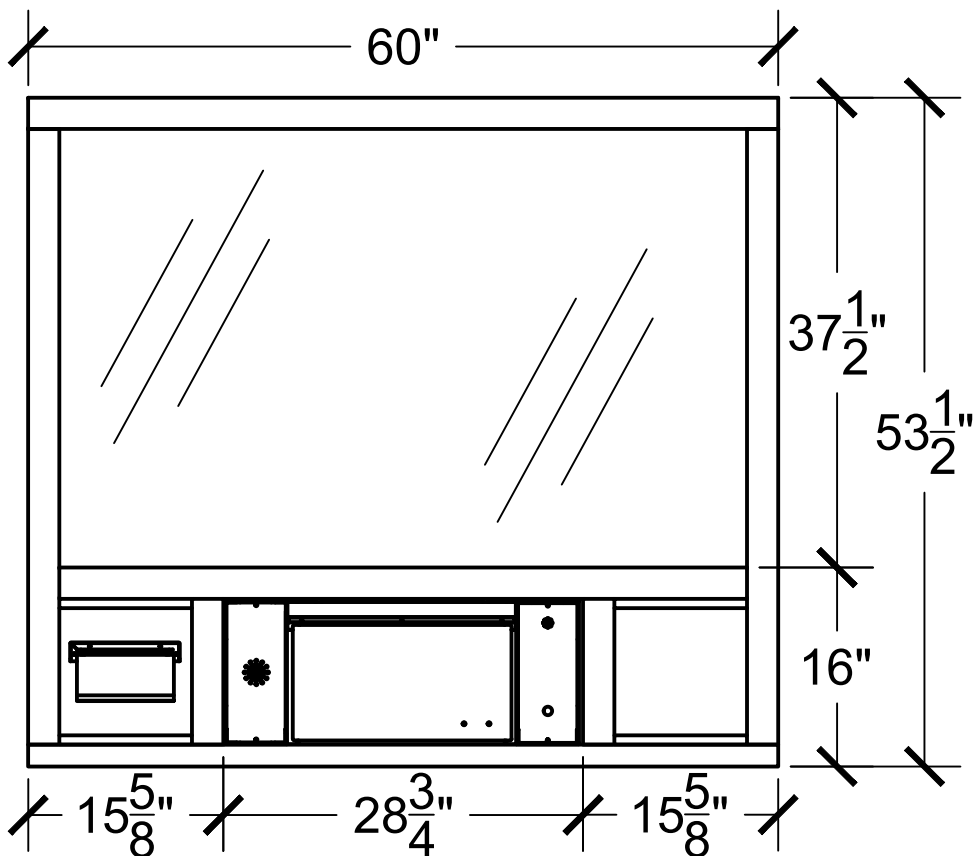




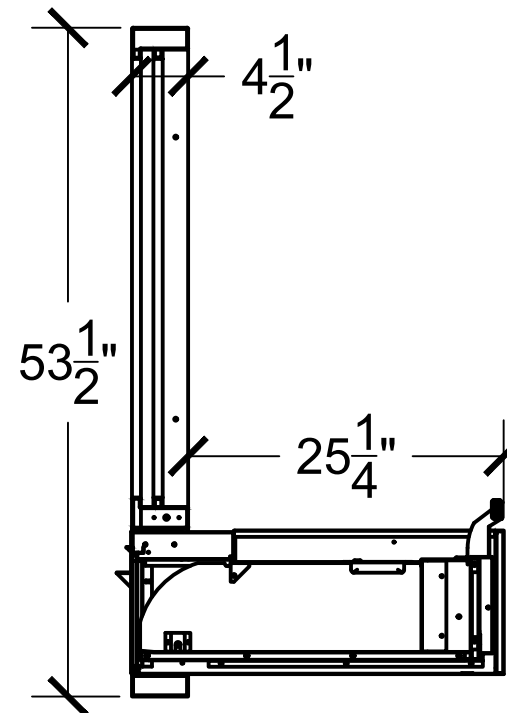
Top View



Interior Front View



Side View



**PLEASE SELECT:**

**1. FRAMING:**

- Aluminum
- Loaded Frame

**2. FRAME COLOR:**

- Bronze Anodized
- Clear Anodized

Other: \_\_\_\_\_

**3. GLAZING:**

- 1/4" Tempered
- 5/8" or 1" Insulated

- 3/4" Poly - L1
- 1-1/4" Acrylic - L1

- 1-1/4" Poly - L3
- 1-1/4" Acrylic - L3

- Storm Impact Low-E

Other: \_\_\_\_\_

**Key Notes**

Unit:

CSE-QS-PCJ-130

Actual Dimension:

60"(W) X 53 <sup>1</sup>/<sub>2</sub>"(H)

Rough Opening:

60 <sup>3</sup>/<sub>8</sub>"(W) X 53 <sup>7</sup>/<sub>8</sub>"(H)

**Engineer Notes**

Date drawn: 12/16/19

Drawn by: A.V.

File name: PCJ-130

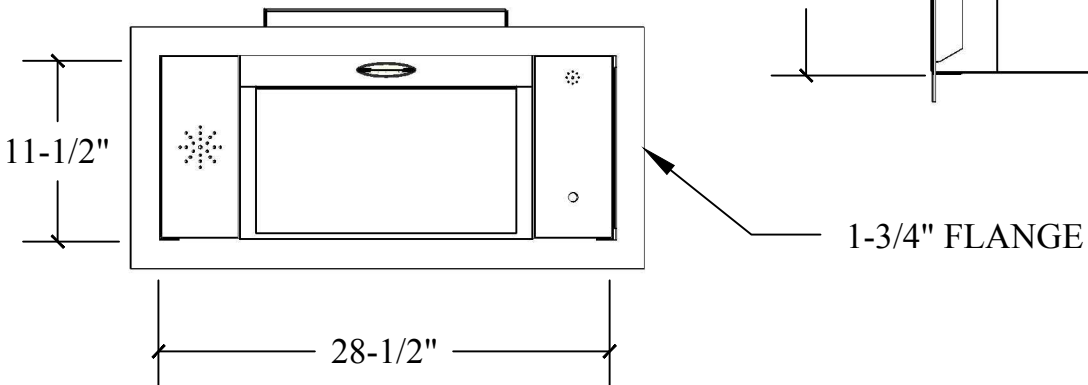
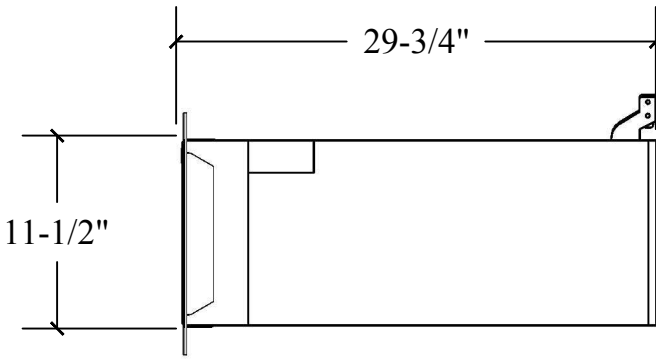
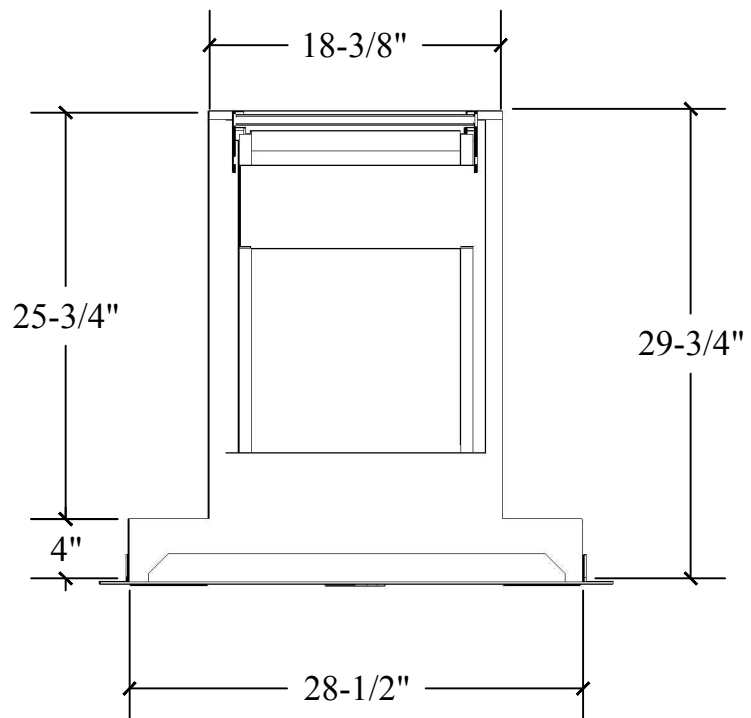
Page: 1 of 1

Scale: 1:16

NOTE: THIS DRAWING EMBODIES A CONFIDENTIAL PROPRIETY DESIGN ORIGINATED AND OWNED BY COVENANT SECURITY EQUIPMENT, AND IS SUBMITTED UNDER A CONFIDENTIAL RELATIONS ALL PATENT, MANUFACTURING, SALE RIGHTS REGARDING THE SAME ARE RESERVED EXCEPT TO THE EXTENT RIGHTS ARE EXPRESSLY GRANTED TO OTHERS. THE RECIPIENT AGREES BY ACCEPTING THESE DRAWINGS NOT TO SUPPLY OR DISCLOSE ANY INFORMATION REGARDING THEM TO ANY UNAUTHORIZED PERSONAL.

SIGNATURE: \_\_\_\_\_

DATE: \_\_\_\_\_



### General Notes

**Actual Dimension**  
28-1/2"(W) x 11-1/2"(H)

**Transfer Area**  
13"(W) x 7-1/2"(H) x 19-1/4"(D)

**Rough Opening**  
28-7/8"(W) x 11-7/8"(H)



TITLE: **CSE-QS-QSP-713S**

Drawing Name: **QSP-713S MAIN VIEW**

DATE 7/13/2016	DRAWN BY RBV	SCALE 1:12	SHEET 2 of 4	SIZE <b>A</b>
-------------------	-----------------	---------------	-----------------	------------------

NOTE: THIS DRAWING EMBODIES A CONFIDENTIAL PROPRIETY DESIGN ORIGINATED AND OWNED BY COVENANT SECURITY EQUIPMENT., AND IS SUBMITTED UNDER A CONFIDENTIAL RELATIONS ALL PATENT, MANUFACTURING, SALE RIGHTS REGARDING THE SAME ARE RESERVED EXCEPT TO THE EXTENT RIGHTS ARE EXPRESSLY GRANTED TO OTHERS. THE RECIPIENT AGREES BY ACCEPTING HIP. THESE DRAWINGS NOT TO SUPPLY OR DISCLOSE ANY INFORMATION REGARDING THEM TO ANY UNAUTHORIZED PERSON.