

TYPICAL SC-4030-IP INSTALLATION

- 1) Quikserv windows must be installed level and square to work properly.
- 2) Anchor per Florida building code anchor schedule.
- 3) Recommended height from floor to service opening to be 36".
(Check any and all local or city codes)
- 4) Silicone all exterior and interior joint
- 5) All other type of anchoring to be approved by certified engineer.

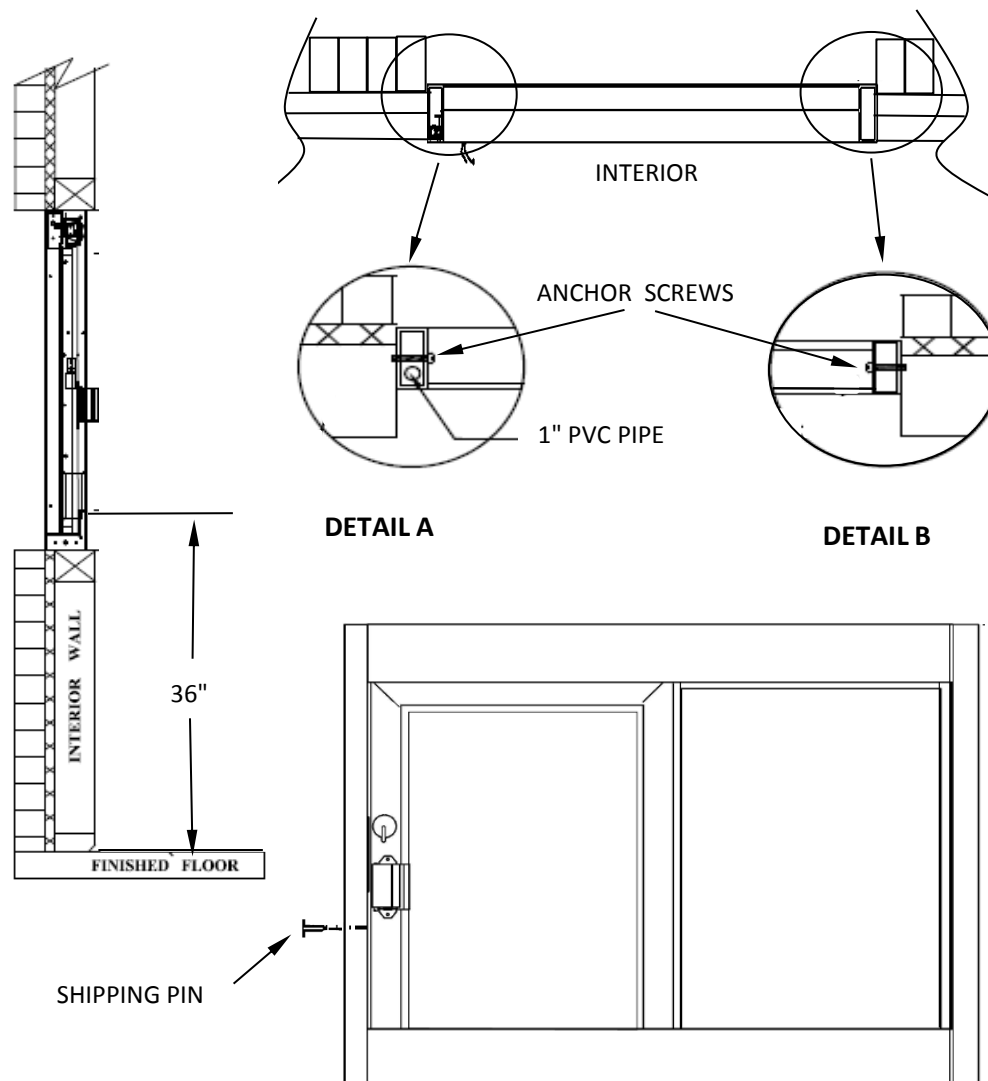


FIGURE 1

General Notes

Actual Dimension
48"(W) x 36"(H)

Service Opening
20-1/4"(W) x 27"(H)

Rough Opening
48-3/8"(W) x 36-3/8"(H)

NOTE 1:

Remove shipping pin before installing the window. The shipping pin is located in the side jamb. (See Figure 1)

NOTE 2:

Anchor Screws to be supplied by contractor. (See Detail A & B)

CAUTION:

Use caution when drilling thru the side jamb. A 1" pvc tube is located inside the lock jamb, depending on left handed or right. Drilling into the 1" pvc tube will void warranty. (See Detail A)



COVENANT
Security Equipment
9323 N. Government Way
Hayden, ID 83835

NOTE: THIS DRAWING EMBODIES A CONFIDENTIAL PROPRIETY DESIGN LICENSED BY COVENANT SECURITY EQUIPMENT. IT IS SUBMITTED UNDER A CONFIDENTIAL RELATIONS ALL PATENT. MANUFACTURING AND SALE RIGHTS REGARDING THE SAME ARE RESERVED EXCEPT TO THE EXTENT RIGHTS ARE EXPRESSLY GRANTED TO OTHERS. THE RECIPIENT AGREES BY ACCEPTING HIP. THESE DRAWINGS NOT TO SUPPLY OR DISCLOSE ANY INFORMATION REGARDING THEM TO ANY UNAUTHORIZED PERSON.

TITLE:
INSTALLATION DOCUMENT - COVENANT SECURITY

Drawing Name
CSE-QS-SC-4030-IP INSTALLATION

DATE
10/1/2017

DRAWN BY
RSV

SCALE
NTS

SHEET
1

SIZE
A