

General Notes

Actual Dimension

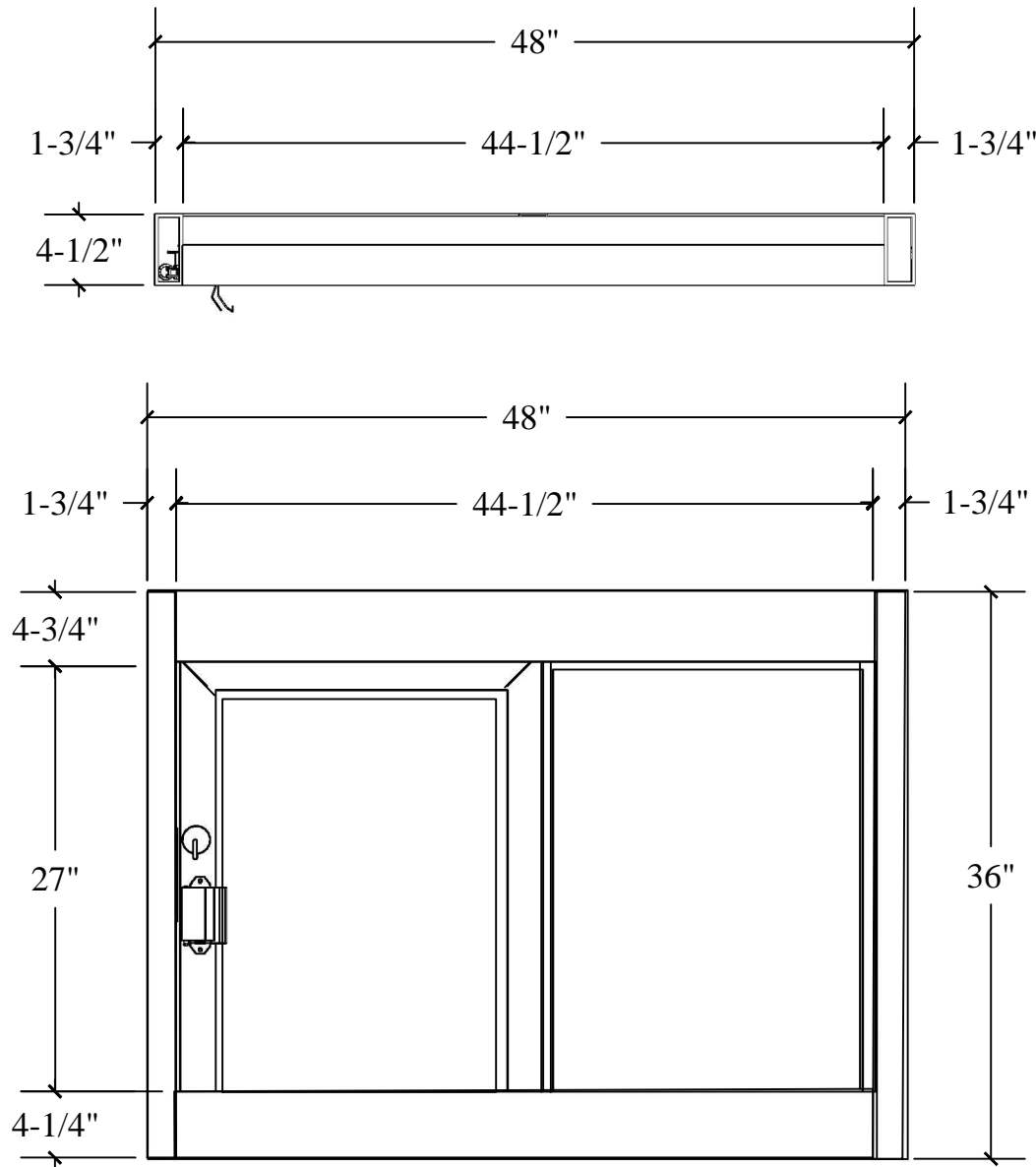
48"(W) X 36"(H)

Service Opening

20-1/4"(W) x 27"(H)

Rough Opening

48-3/8"(W) X 36-3/8"(H)



COVENANT
Security Equipment
9323 N. Government Way
Hayden, ID 83835

TITLE: **SELF - CLOSING-IP DRIVE-THRU WINDOW**

Drawing Name
CSE-QS-SC-4030-IP THREE SIDE VIEW

DATE 4/05/2016	DRAWN BY RBV	SCALE 1:12	SHEET 1 of 4	SIZE A
--------------------------	------------------------	----------------------	------------------------	------------------

NOTE: THIS DRAWING EMBODIES A CONFIDENTIAL PROPRIETY DESIGN LICENSED BY COVENANT SECURITY EQUIPMENT. IT IS SUBMITTED UNDER A CONFIDENTIAL RELATIONS ALL PATENT, MANUFACTURING AND SALE RIGHTS REGARDING THE SAME ARE RESERVED EXCEPT TO THE EXTENT RIGHTS ARE EXPRESSLY GRANTED TO OTHERS. THE RECIPIENT AGREES BY ACCEPTING HIP. THESE DRAWINGS NOT TO SUPPLY OR DISCLOSE ANY INFORMATION REGARDING THEM TO ANY UNAUTHORIZED PERSON.