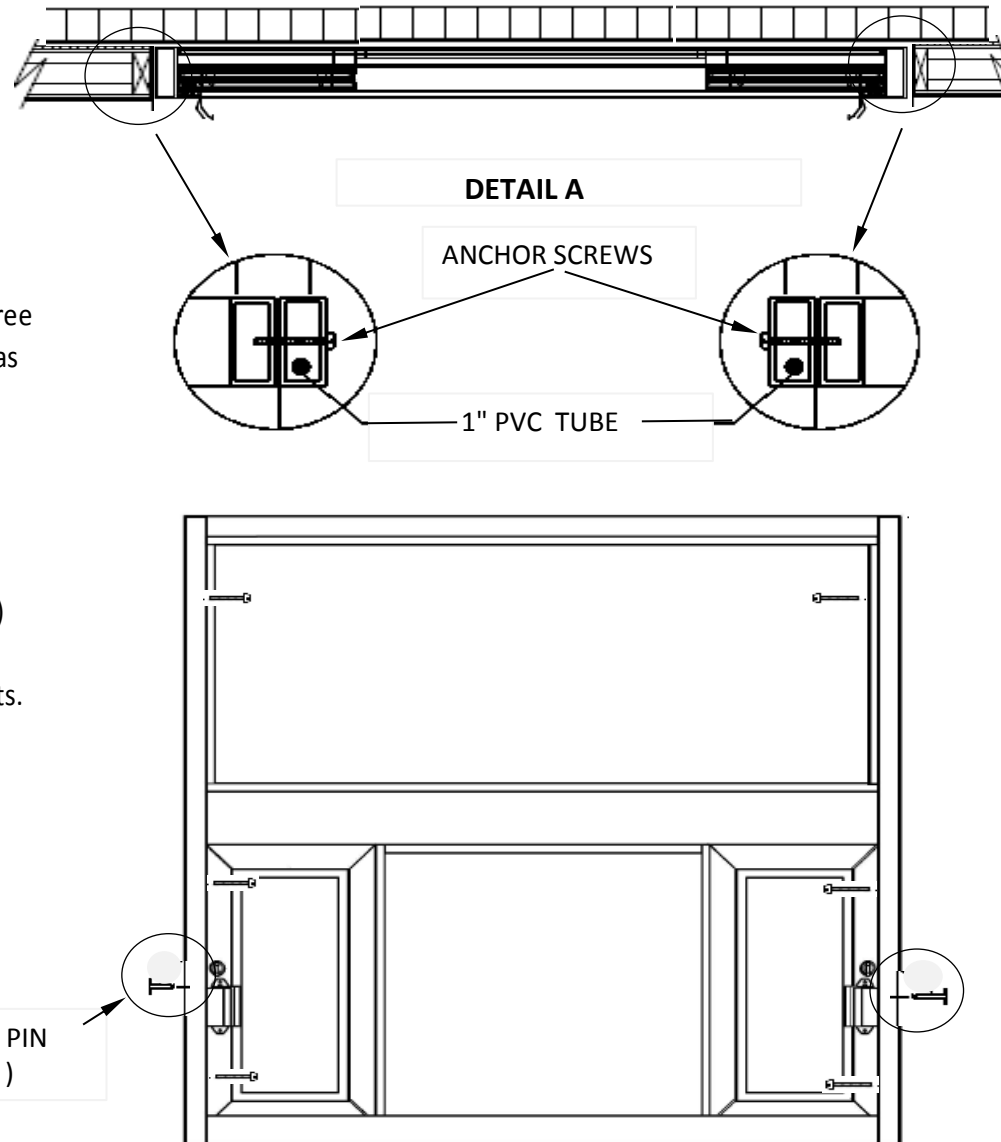


# **TYPICAL SCDS-6056 INSTALLATION**

- 1) Quikserv windows must be installed level and square to work properly.
- 2) Anchor through each side jamb at three places approx. 5" at top and bottom as well as the middle of each jamb.  
(See Figure 1)
- 4) Recommended height from floor to service opening to be 36".  
(Check any and all local or city codes)
- 5) Silicone all exterior and interior joints.
- 6) All other type of anchoring to be approved by certified engineer.



**FIGURE 1**

## **General Notes**

**Actual Dimension**  
60"(W) x 56"(H)

**Service Opening-Each Side**  
12-1/2"(W) x 24"(H)

**Rough Opening**  
60-1/2"(W) x 56-1/2"(H)

**NOTE 1:**  
Anchor screws to be supplied by contractor.

**NOTE 2:**  
Remove shipping pins before installing the window. The shipping pins are located in the side jambs.  
(See Figure 1)

**CAUTION:**  
Use caution when drilling thru the side jamb. 1" PVC tube is located inside the side jamb. Drilling into the 1" pvc tube will void warranty.  
(See DETAIL A)

**SE COVENANT**  
Security Equipment  
9323 N Government Way  
Hayden, ID 83835

NOTE: THIS DRAWING EMBODIES A CONFIDENTIAL PROPRIETY DESIGN ORIGINATED AND OWNED BY COVENANT SECURITY EQUIPMENT SUBMITTED UNDER A CONFIDENTIAL RELATIONS ALL PATENT, MANUFACTURING, SALE RIGHTS REGARDING THE SAME ARE RESERVED EXCEPT TO THE EXTENT RIGHTS ARE EXPRESSLY GRANTED TO OTHERS. THE RECIPIENT AGREES BY ACCEPTING HIP. THESE DRAWINGS NOT TO SUPPLY OR DISCLOSE ANY INFORMATION REGARDING THEM TO ANY UNAUTHORIZED PERSON.

**TITLE:**

**INSTALLATION PROCEDURE**

**DRAWING NAME:**

**CSE-QS-SCDS-6056 INSTALLATION**

**DATE**

**6/27/2016**

**DRAWN BY**

**RBV**

**SCALE**

**NTS**

**SHEET**

**1 of 1**

**SIZE**

**A**