

General Notes

Actual Dimension

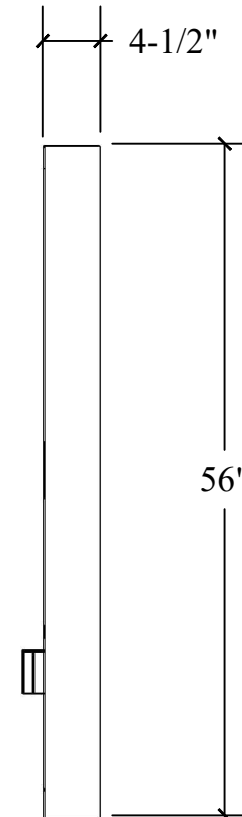
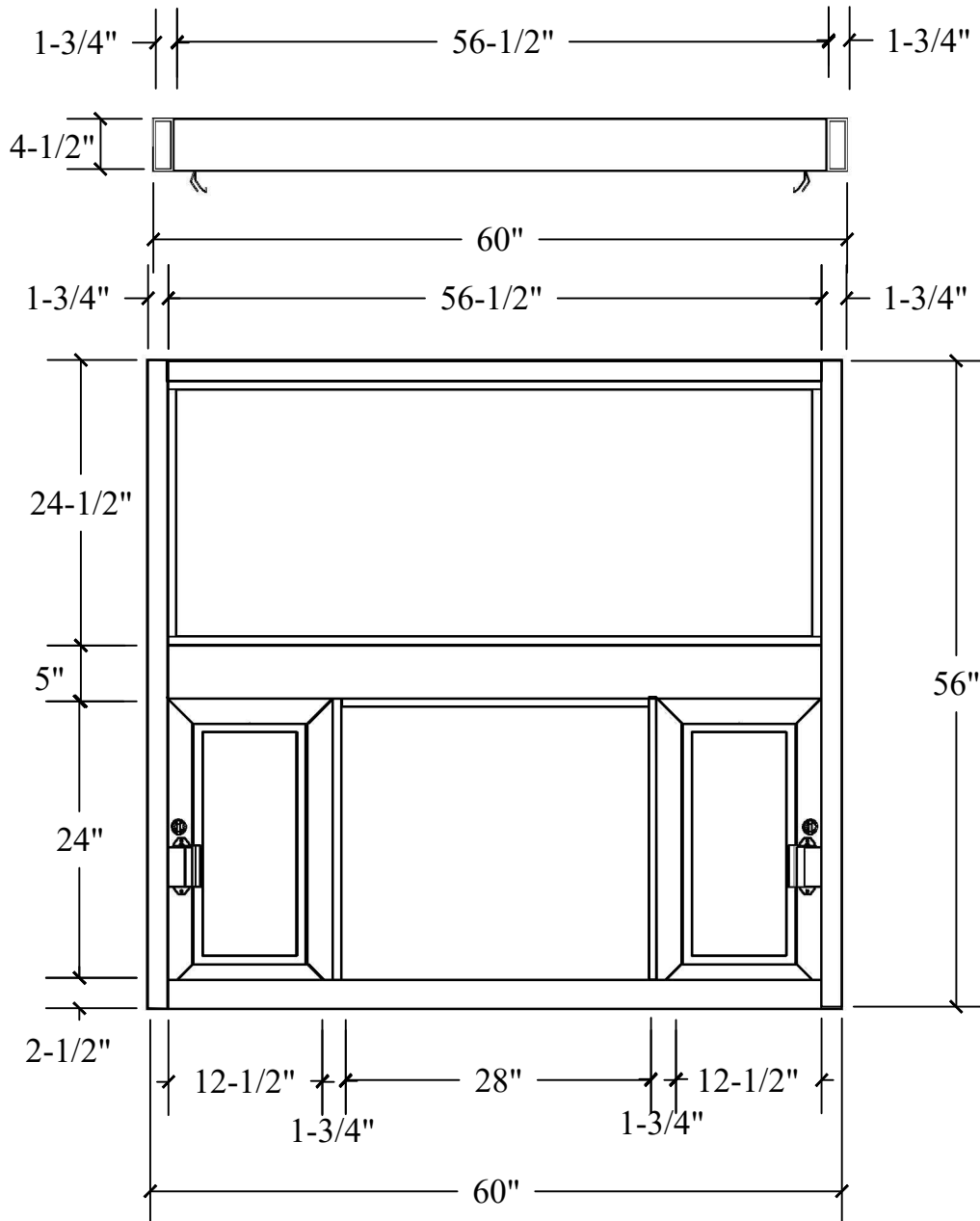
60"(W) x 56"(H)

Service Opening-Each Side

12-1/2"(W) x 24"(H)

Rough Opening

60-1/2"(W) x 56-1/2"(H)



COVENANT
Security Equipment
9323 N Government Way
Hayden, ID 83835

TITLE:
MANUAL OPEN, SELF CLOSING DOUBLE SLIDER

DRAWING NAME: **CSE-QS-SCDS-6056 THREE-SIDE VIEW**

DATE
6/27/2016

DRAWN BY
RBV

SCALE
1:16

SHEET
1 of 4

SIZE
A

NOTE: THIS DRAWING EMBODIES A CONFIDENTIAL PROPRIETY DESIGN ORIGINATED AND OWNED BY COVENANT SECURITY EQUIPMENT SUBMITTED UNDER A CONFIDENTIAL RELATIONS ALL PATENT, MANUFACTURING, SALE RIGHTS REGARDING THE SAME ARE RESERVED EXCEPT TO THE EXTENT RIGHTS ARE EXPRESSLY GRANTED TO OTHERS. THE RECIPIENT AGREES BY ACCEPTING HIP. THESE DRAWINGS NOT TO SUPPLY OR DISCLOSE ANY INFORMATION REGARDING THEM TO ANY UNAUTHORIZED PERSON.