

General Notes

Actual Dimension
36"(W) x 36"(H)

Rough Opening
36-3/8"(W) x 36-3/8"(H)

NOTE 1:
Anchor Screws to be supplied by contractor. Anchor screws to be #14 x 3-1/2".

NOTE 2:
Only clean glazing with mild soap and water.

CAUTION:
Use caution when anchoring any other way. All Thread Rods are located in each side jamb. (See Detail A)

 **COVENANT**
Security Equipment
www.covenantsecurityequipment.com

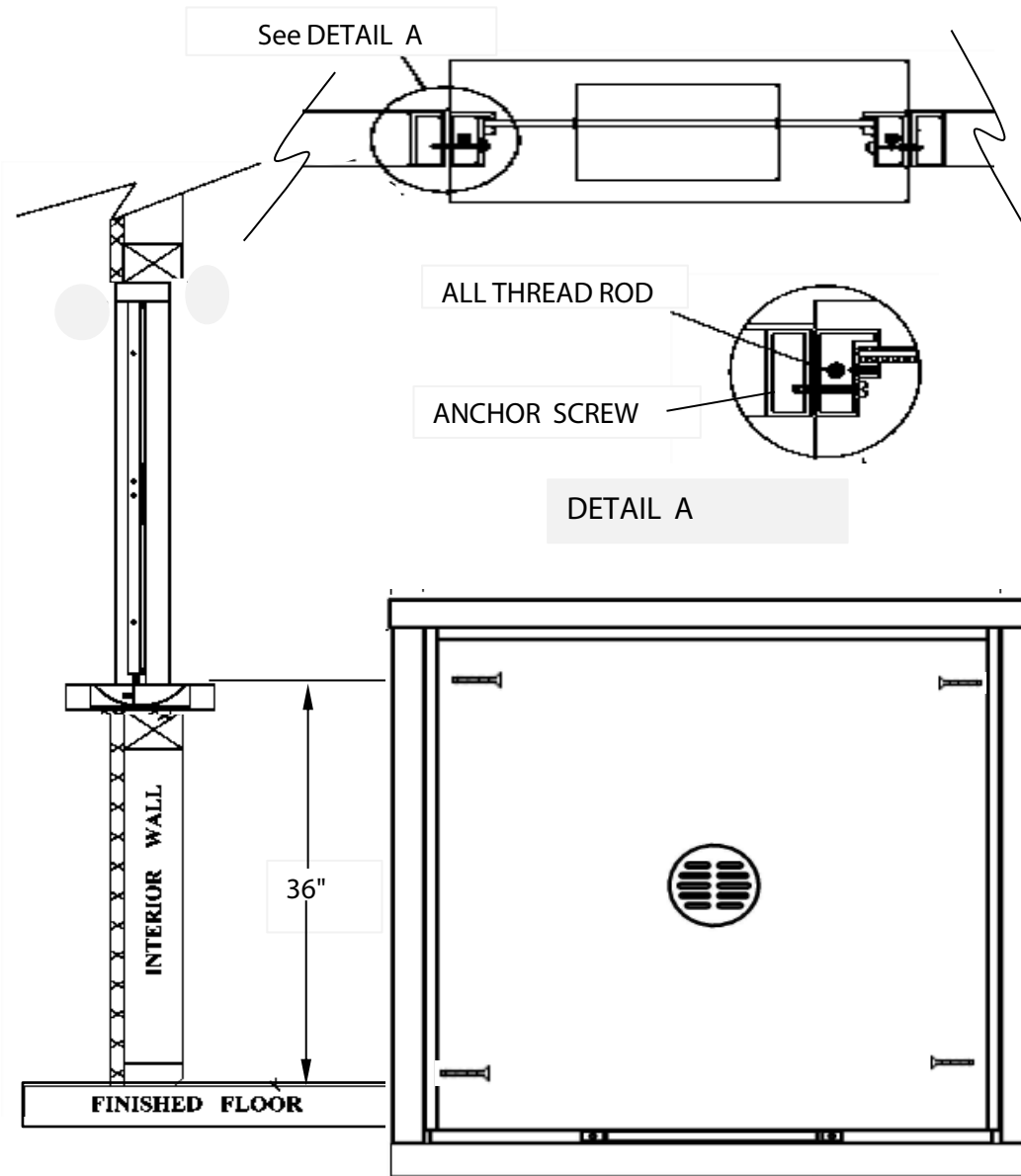


FIGURE 1

TYPICAL INSTALLATION

- 1) Window must be installed level and square to work properly.
- 2) Anchor through each side jamb through the pre-drilled holes. (See Figure 1)
- 3) Recommended height from floor to service opening to be 36". (Check all local and city codes)
- 4) All other type of anchoring to be approved by certified engineer.

TITLE:

INSTALLATION PROCEDURE

Drawing Name:

CSE-QS-TW1 Installation Instructions

DATE

7/12/2016

DRAWN BY

RBV

SCALE

NTS

SHEET

1 of 1

SIZE

A

NOTE: THIS DRAWING EMBODIES A CONFIDENTIAL PROPRIETY DESIGN ORIGINATED AND OWNED BY COVENANT SECURITY EQUIPMENT, AND IS SUBMITTED UNDER A CONFIDENTIAL RELATIONS ALL PATENT, MANUFACTURING, SALE RIGHTS REGARDING THE SAME ARE RESERVED EXCEPT TO THE EXTENT RIGHTS ARE EXPRESSLY GRANTED TO OTHERS. THE RECIPIENT AGREES BY ACCEPTING HIP. THESE DRAWINGS NOT TO SUPPLY OR DISCLOSE ANY INFORMATION REGARDING THEM TO ANY UNAUTHORIZED PERSON.