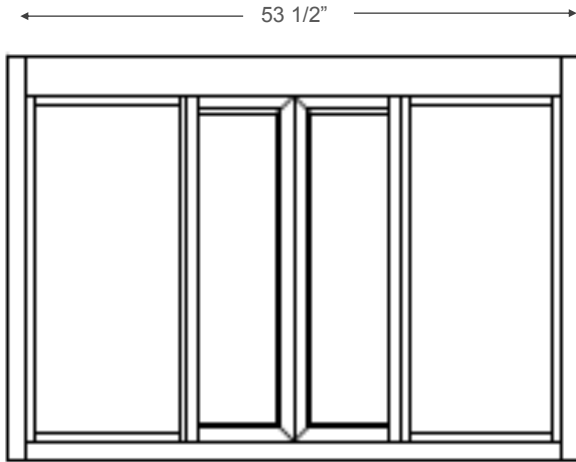




All windows ship completely pre-assembled, fully glazed and ready to install.



- ◇ Installation illustrations are for reference only. Construction conditions and local codes prevail.
- ◇ Must be installed level, square and plumb.
- ◇ Recommend approximately 36" from top of sill to interior finished floor (or per local code).
- ◇ Rough opening 1/2" larger than overall frame size recommended to allow 1/4" space all around for leveling.

TWO STANDARD WINDOW HEIGHTS

37-3/4" H WITH 18"W x 31"H SERVICE OPENING

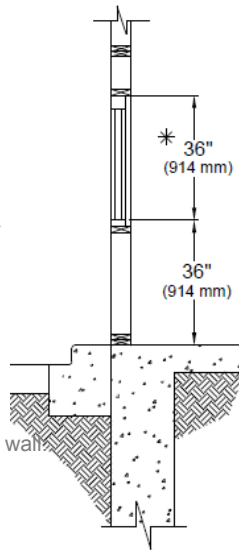
43-3/4" H WITH 18"W x 37"H SERVICE OPENING

FRAME DEPTH: 4"

Set rough opening 34 1/4" from interior finished floor for 36" counter height sill.

Local codes prevail.

* When optional hip scan electric option is chosen, power is pulled from bottom of jam (left side from outside view). Note: ensure wires are accessible to interior. Hip scan will mount on interior wall.



ELECTRIC REQUIREMENTS FOR WINDOW

Fully Automatic Electric:

Run power to header on right side (from outside view)
 Domestic: 115 vac—60Hz with a 15 amp dedicated circuit
 Int'l: 220/240 vac - 60 Hz with an 8 amp dedicated circuit

Manual Open / Self Close Window:
 No Power Required