



COVENANT
Security Equipment

275 SERIES w/ Attached Transom

The 275 Series

Single Panel Slider with Attached Transom

provides extra light and the flexibility to add integrated heated or non-heated air curtains to your design as dictated by the regional climate.

Choose your mode of operation

◇ MANUAL OPEN / SELF CLOSE

Manual open, with patented hands-free gravity close. Economical and easy to maintain.

◇ MANUAL OPEN / ELECTRONIC RELEASE (MOER)

Electromagnetic “hold open” feature paired with a presence sensor offers the control of manual open with a gravity-fed close that won’t release while interacting with customers. Hands free interaction that is easy to maintain.

◇ ELECTRIC

Fully automatic electric, for hands free open & close

SIZE

Window Frame Size: 47-1/2"W x 43-1/2"H

Service Opening: 19"W x 35"H

Overall Frame Size with 16" Transom: 47-1/2"W x 59-1/2" H x 4" D

Rough Opening: 48" W x 60" H

STANDARD FEATURES:

- ◇ Anodized aluminum extrusions and stainless steel combine to give you an attractive window that will not rust, pit or weather
- ◇ Fully assembled, pre-glazed and ready to install
- ◇ 1/4" Clear Tempered Glass
- ◇ Dark Bronze or Clear Anodized Aluminum
- ◇ Self latches every time it closes. Also includes a thumb turn lock, and night locking bar
- ◇ Track free bottom sill provides for a contaminant free surface. Angled toward outside for drainage toward exterior
- ◇ One year parts & labor limited warranty
- ◇ On-staff tech support / stocked parts / nationwide network of service providers.

OPTIONAL FEATURES

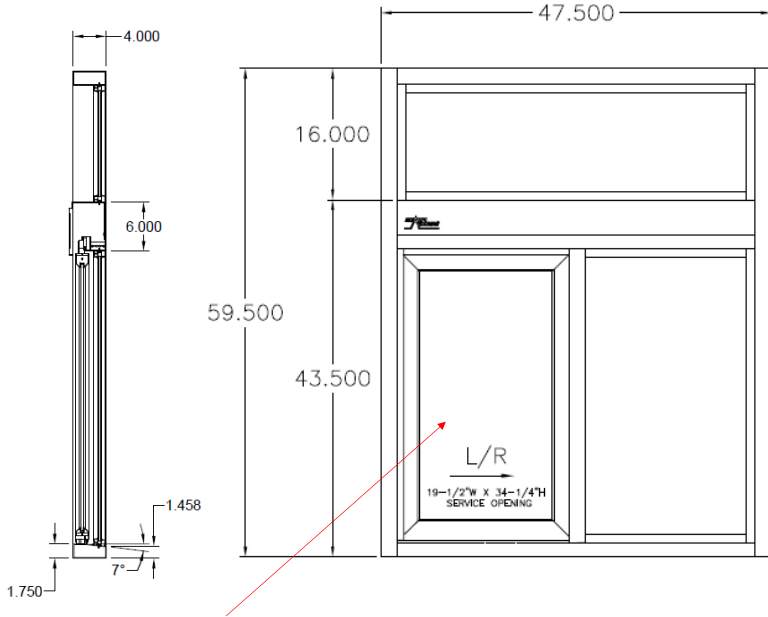
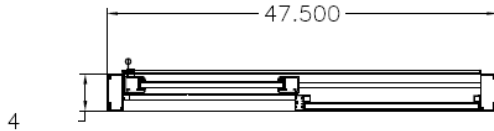
- ◇ Powder Coat Paint—Tiger Drylac
- ◇ Custom Size
- ◇ Tinted Glazing
- ◇ Low E Glass
- ◇ 5/16" Safety Glass
- ◇ Stainless Steel Shelf to extend sill inside or out (13 ga.)
- ◇ Telescoping Night Time Security Bar Set for additional security
- ◇ AA300 Heated Air Curtain (replaces transom)
- ◇ Transom for AA100 Fly Fan—Standard Opening
- ◇ Transom for AA100 Fly Fan—Restricted Opening
- ◇ Restriction Panel or Screen



COVENANT
Security Equipment

275 SERIES w/ Attached Transom

All windows are shipped completely pre-assembled, fully glazed and ready to install.



SERVICE OPENING

Specify L/R or R/L slide from exterior view

- ◇ Installation illustrations are for reference only. Construction conditions and local codes prevail.
- ◇ Must be installed level, square and plumb.
- ◇ Recommend approximately 36" from top of sill to interior finished floor (or per local code).
- ◇ 48" W x 60" H rough opening recommended for leveling.

