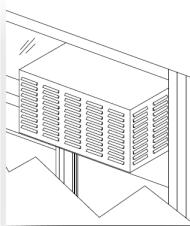
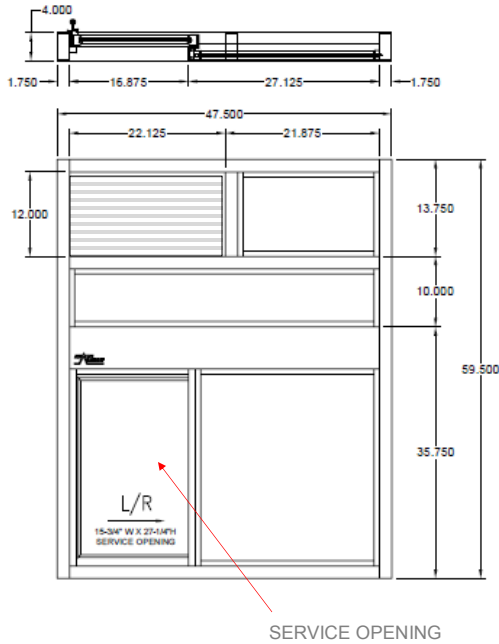


WEST COAST WINDOW PACKAGE

Designed to meet CA Retail Food Code

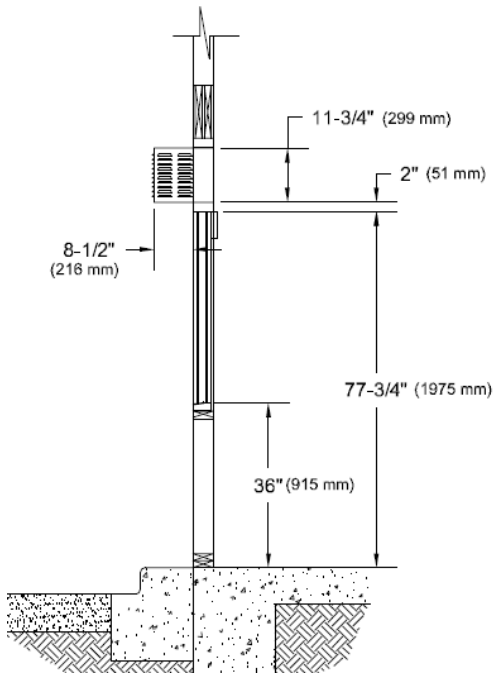


AA100 Fly Fan Air Curtain

All windows are shipped completely pre-assembled, fully glazed and ready to install.

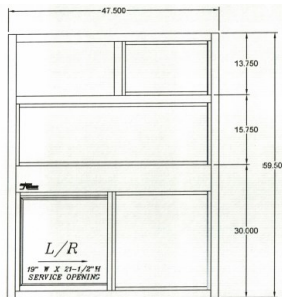
- ◇ Installation illustrations are for reference only. Construction conditions and local codes prevail.
- ◇ Must be installed level, square and plumb.
- ◇ Recommend approximately 36" from top of sill to interior finished floor (or per local code).
- ◇ 48" W x 60" H rough opening recommended for leveling.

Specify L/R or R/L opening direction from outside view



VARIATION

West Coast Wide for shorter / wider service opening. Same overall frame size



ELECTRIC REQUIREMENTS FOR WINDOW

Run power to header on fixed panel side.

Manual Open / Electronic Release and Fully Automatic Electric:
115 vac—60Hz with a 15 amp dedicated circuit

Manual Open / Self Close Window:
No Power Required

ELECTRIC REQUIREMENTS FOR AA100

Run power to center of window above the header

15 AMP 104/120 V Single Phase

60Hz

Dedicated Circuit

