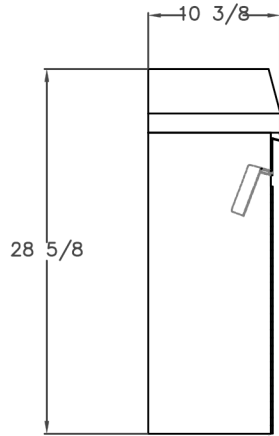


M450 INCLUDES

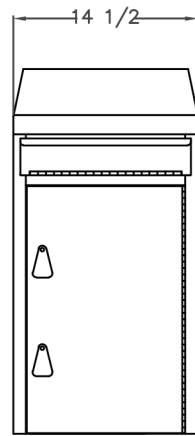
ACCESSORY OPTIONS

PART ID	DESCRIPTION
0148	THIS ALL STAINLESS STEEL SECURITY CABINET AND MANSARD CAP FEATURES HEAVY DUTY BOLT-WELD CONSTRUCTION AND IS NOMINALLY 15 X 10 X 29" INCHES HIGH. THE DEPOSITORY INCLUDES AN INDUSTRIAL HINGED DOOR, (2) BRASS WORKS LOCKS, (2) DOUBLE-BITTED KEYS, STRONG CAMS, LOCK COVERS, FLOOR LINER, AND DRIP LEDGE INSTALLED ABOVE DELIVERY SLOT. THE DELIVERY SLOT'S CLEAR OPENING IS 12 X 1.5 INCHES HIGH AND RECEIVES ENVELOPES UP TO 16 INCHES LONG. THE SLOT PROVIDES TILT-AND-SLIDE EASY DELIVERY ALONG WITH ANTI TAMPER PROTECTION. (3) BLACK SIGNS: "PLACE ENVELOPES HERE", "PULL TO DROP", AND "THANK YOU".

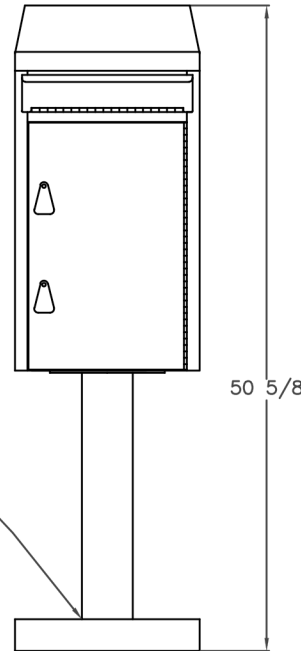
PART ID	DESCRIPTION
22-OC	22 INCH PLATFORM STAINLESS STEEL PEDESTAL
0203	57 INCH IN-GROUND STAINLESS STEEL PEDESTAL
0502	54 INCH STAINLESS STEEL PROTECTOR POSTS (ONE PAIR)
1002	ID PLATE 1.25 X 8.5 INCHES WIDE ENGRAVED WITH YOUR NAME
1101	OCEAN FRONT FINISH POWDER COAT SALT RESISTANT FINISH, FOR EACH CABINET, PEDESTAL, OR PAIR OF PROTECTOR POSTS.
1008	CUSTOM VINYL MESSAGE AND/OR COLOR
1102	POWDER COAT ENTIRE CABINET ONE COLOR
1103	CUSTOM COLOR MATCH PLEASE PROVIDE DESIGN OR COLOR SWATCH



LEFT SIDE VIEW

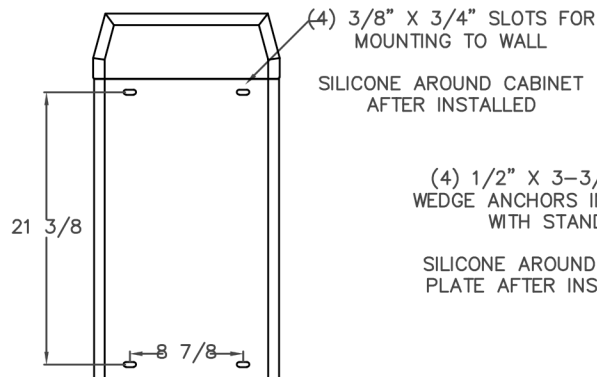


FRONT VIEW



22" PLATFORM PEDESTAL ANCHORS
WITH (4) 1/2" SS ANCHORS

1. MARK AND DRILL HOLE SAME SIZE AS ANCHOR
2. TAP IN ANCHOR
3. SECURE WITH WRENCH



BACK VIEW

(4) 1/2" X 3-3/4" SS
WEDGE ANCHORS INCLUDED
WITH STAND

SILICONE AROUND COVER
PLATE AFTER INSTALLED

NOTE: THIS DRAWING EMBODIES A CONFIDENTIAL PROPRIETY DESIGN LICENSED BY COVENANT SECURITY EQUIPMENT. IT IS SUBMITTED UNDER A CONFIDENTIAL RELATIONS ALL PATENT. MANUFACTURING AND SALE RIGHTS REGARDING THE SAME ARE RESERVED EXCEPT TO THE EXTENT RIGHTS ARE EXPRESSLY GRANTED TO OTHERS. THE RECIPIENT AGREES BY ACCEPTING HIP. THESE DRAWINGS NOT TO SUPPLY OR DISCLOSE ANY INFORMATION REGARDING THEM TO ANY UNAUTHORIZED PERSON.

TITLE
MODEL 450
LARGE ENVELOPE DEPOSITORY CUT SHEET

PART NAME
M450-OW OR OC

REV	DESCRIPTION	DATE	BY
	RELEASE	02-17-12	JRS

COVENANT
Security Equipment
9323 N. Government Way
Hayden, ID 83835

SHEET	PART ID #	SCALE	REV
1 OF 1	SEE ABOVE	NTS	